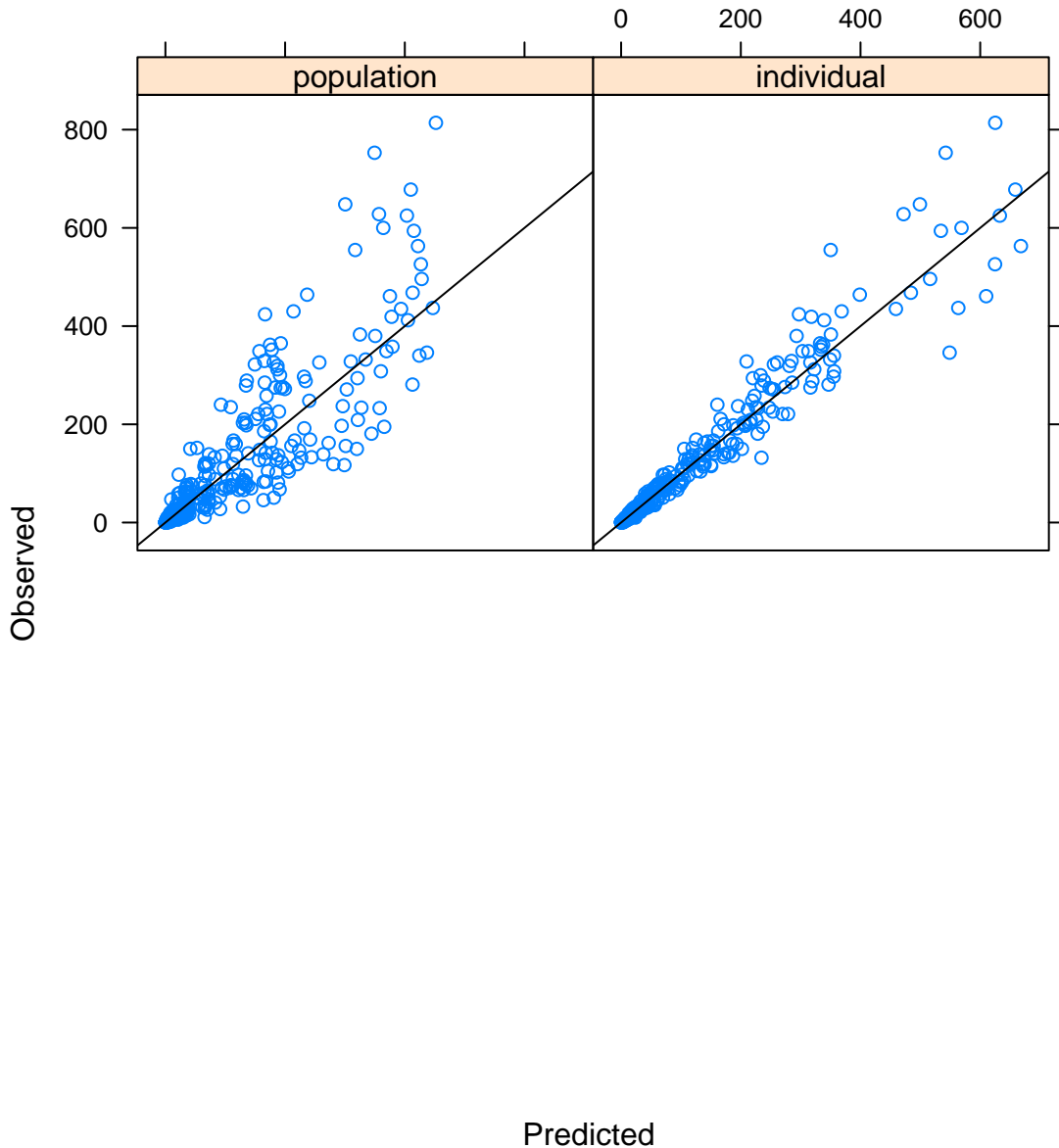


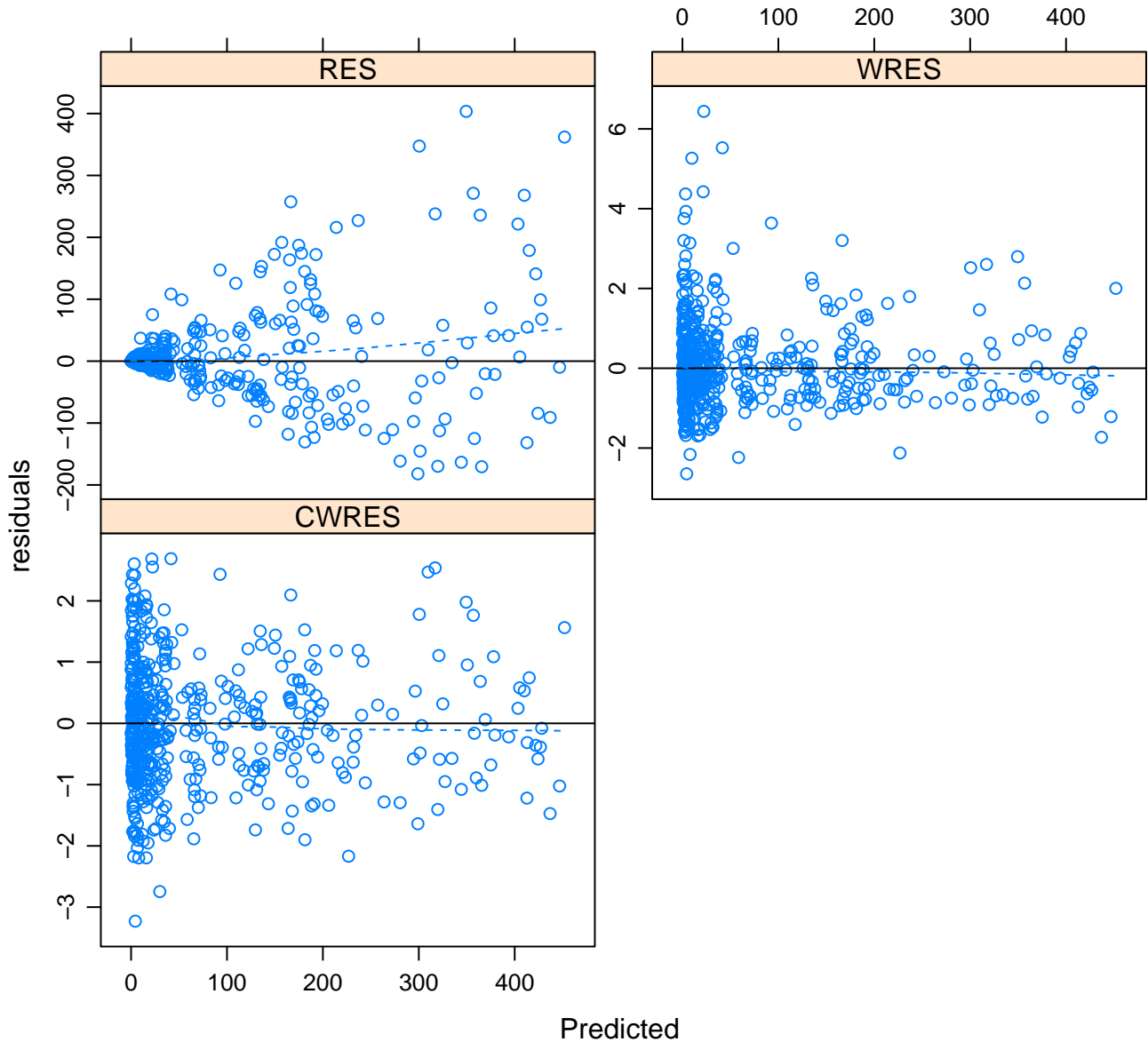
# Model 1005

## Observed vs. Predicted for all data



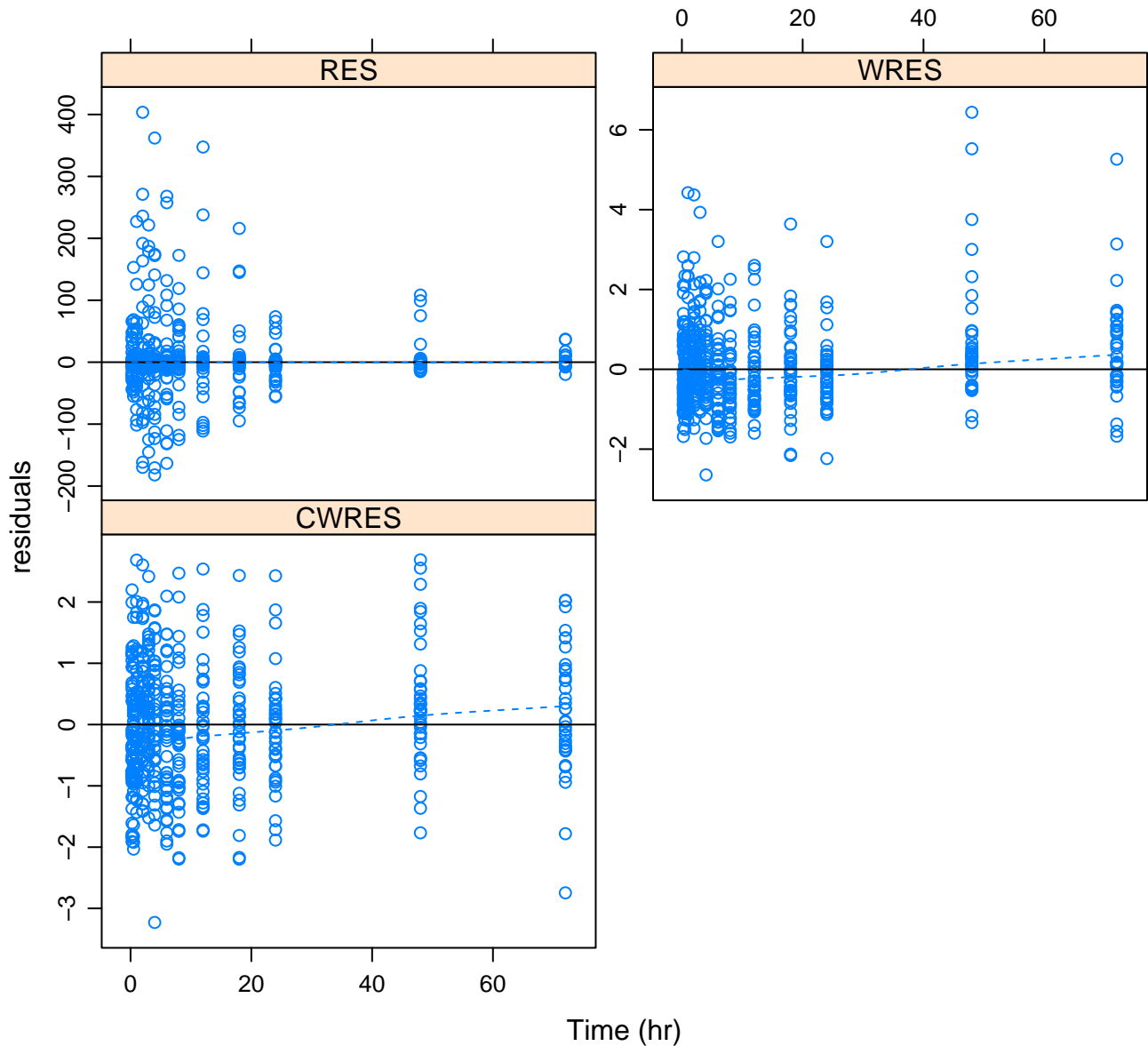
# Model 1005

## Residuals vs. Predicted for all data



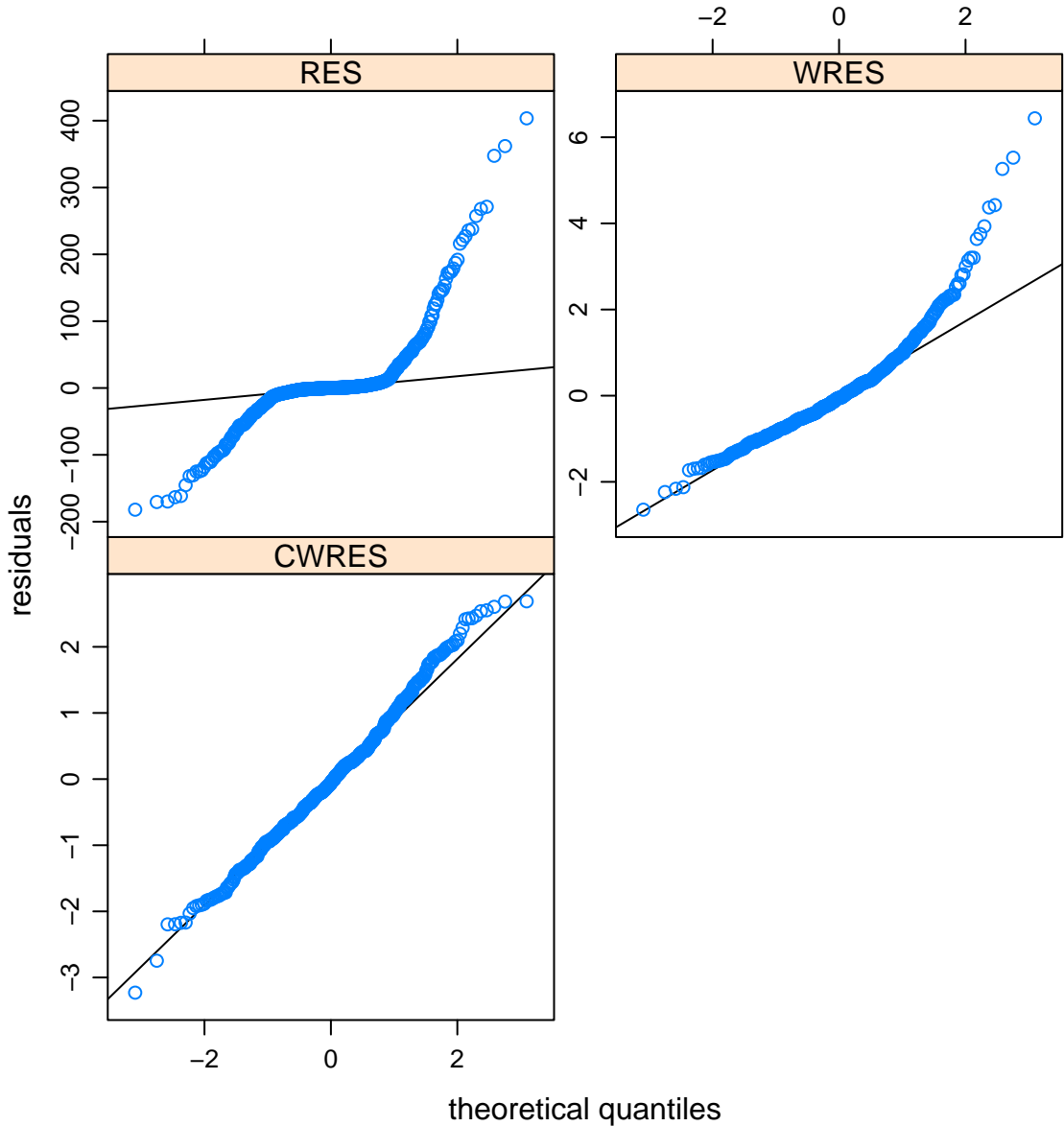
# Model 1005

## Residuals vs. Time for all data

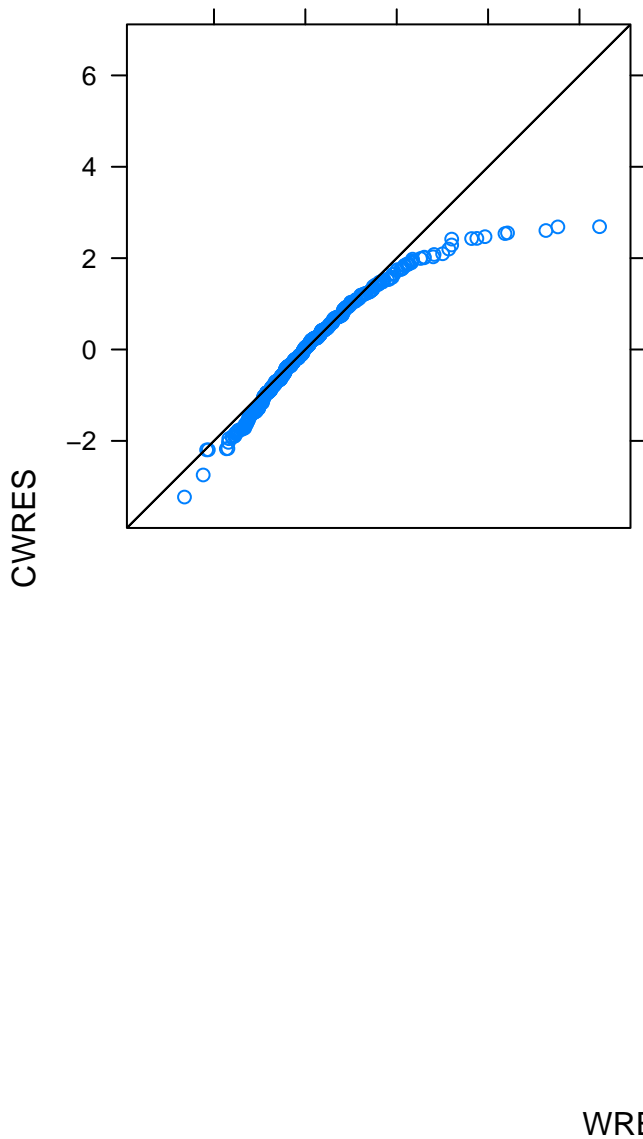


# Model 1005

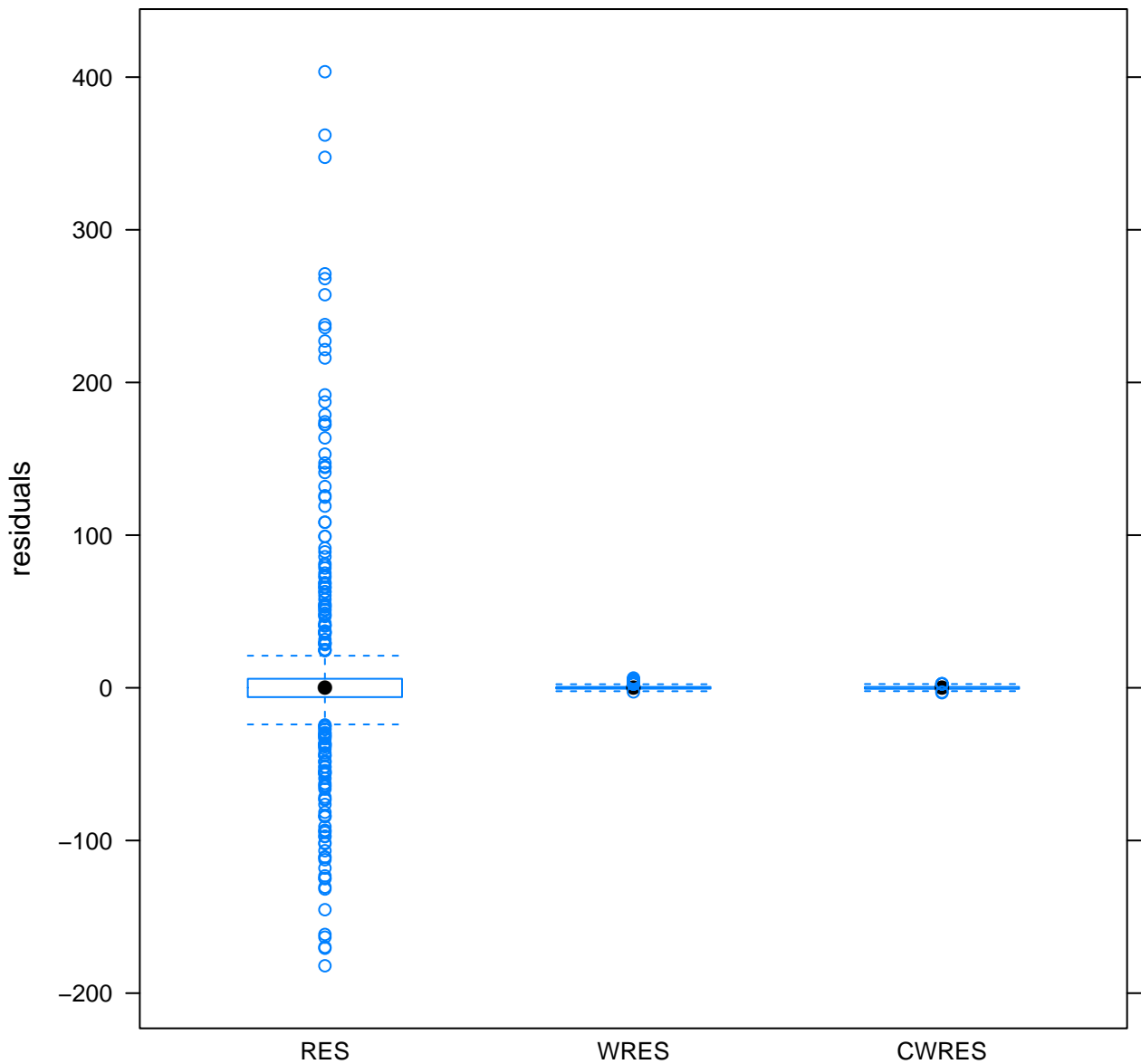
## Normal Q-Q Plot Residuals for all data



**Model 1005**  
**Q-Q Plot of CWRES vs. WRES for all data**

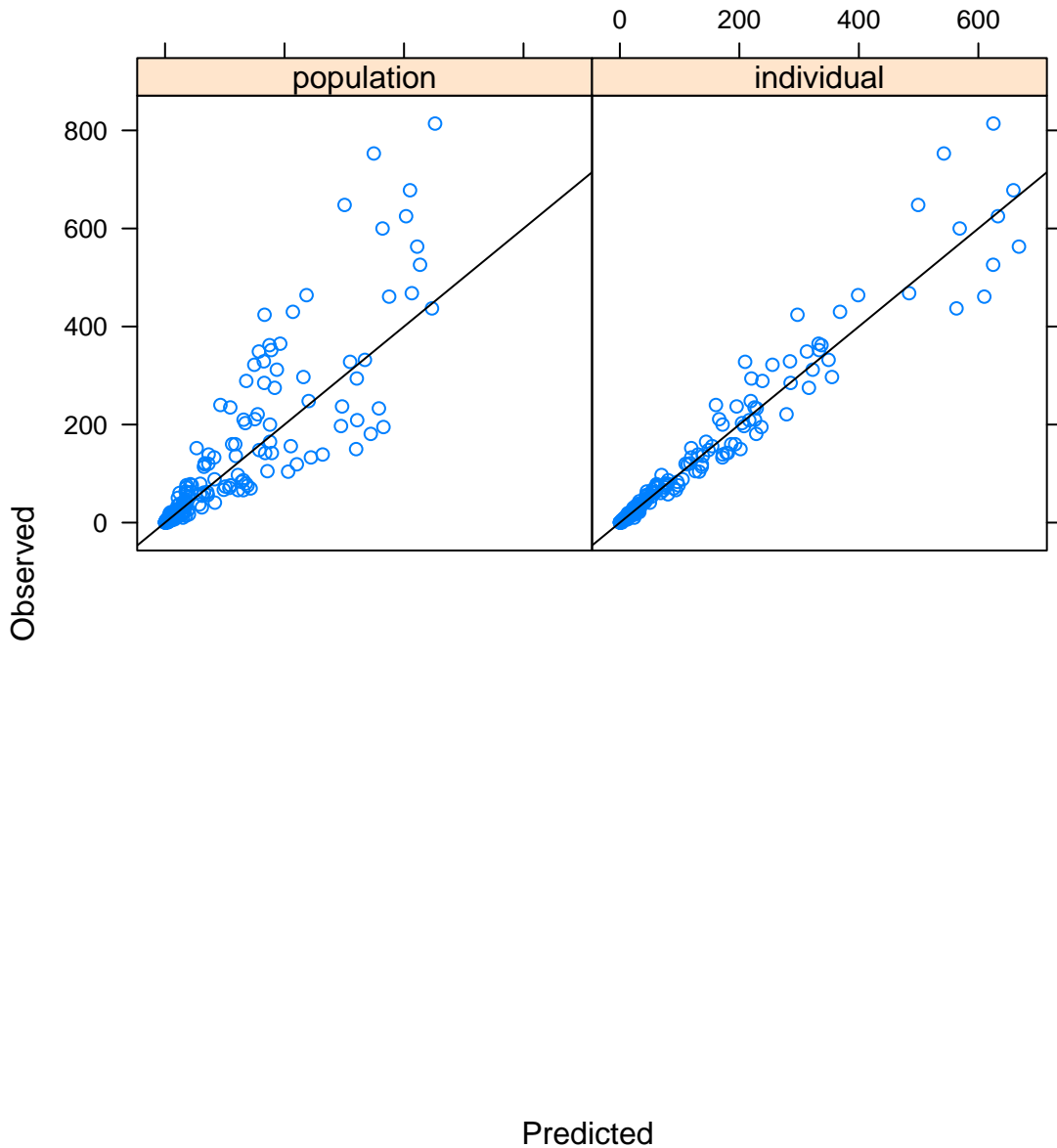


**Model 1005 Boxplots of Residuals for all data**



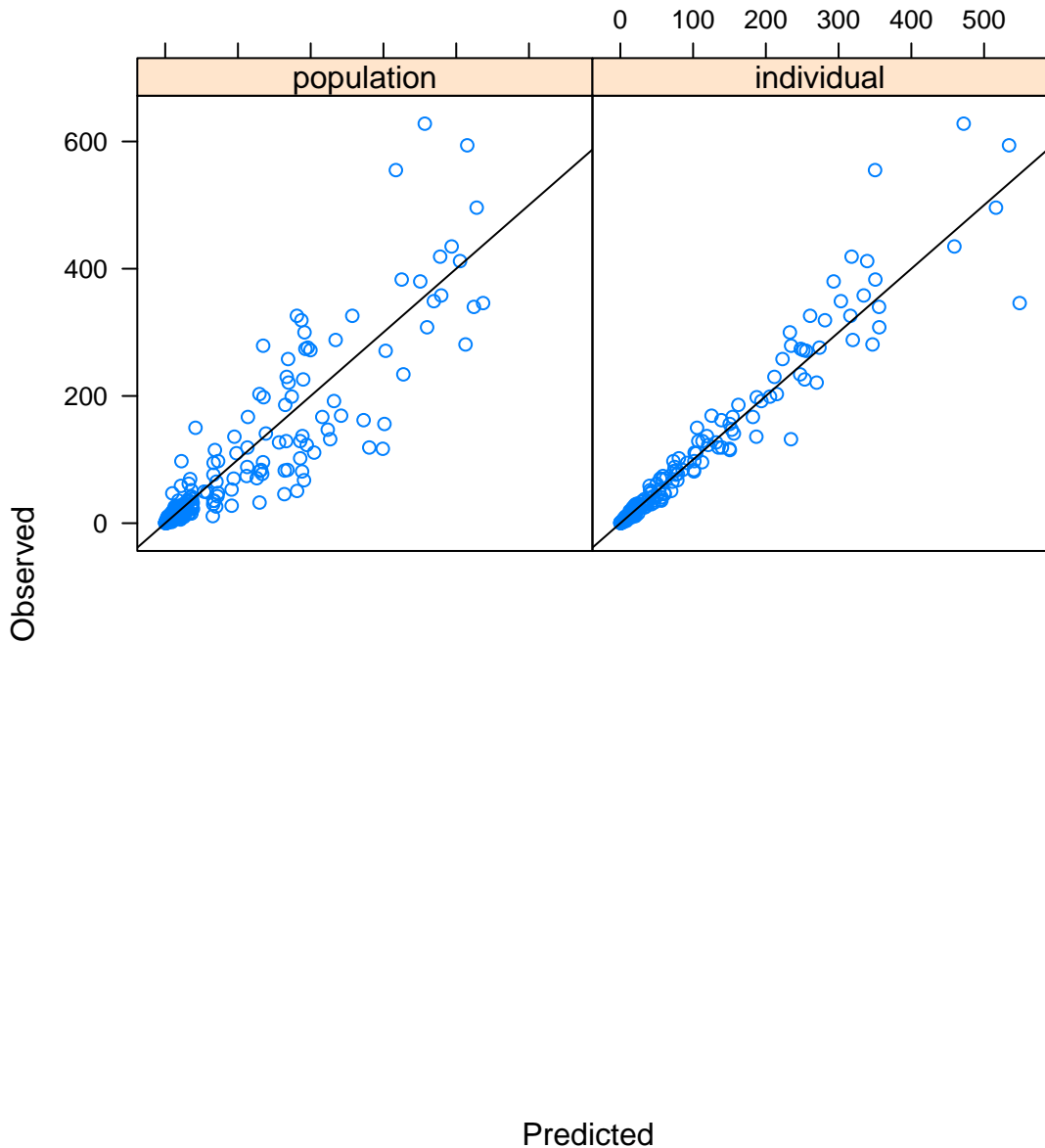
# Model 1005

## Observed vs. Predicted for female data



# Model 1005

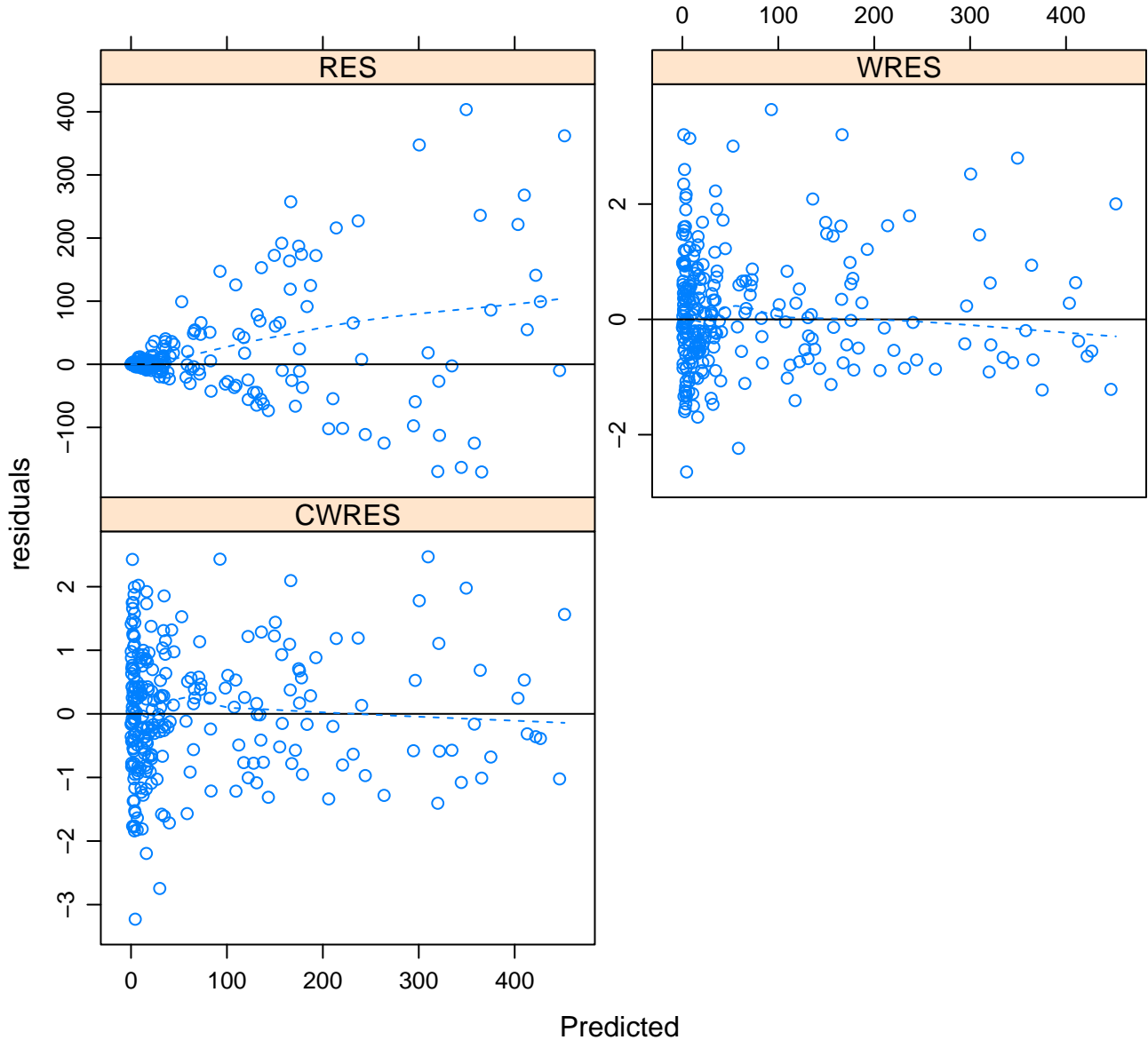
## Observed vs. Predicted for male data



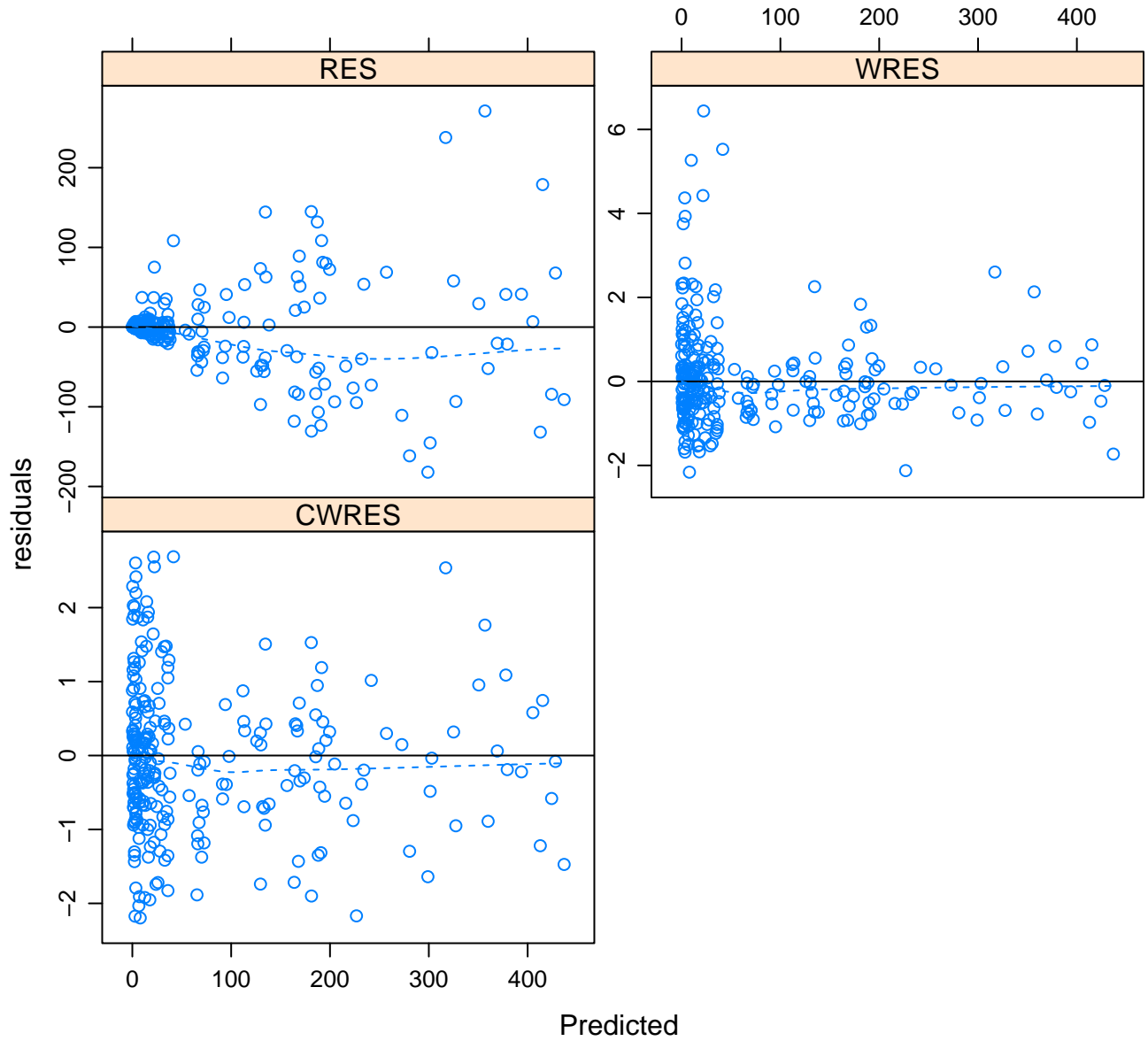


# Model 1005

## Residuals vs. Predicted for female data

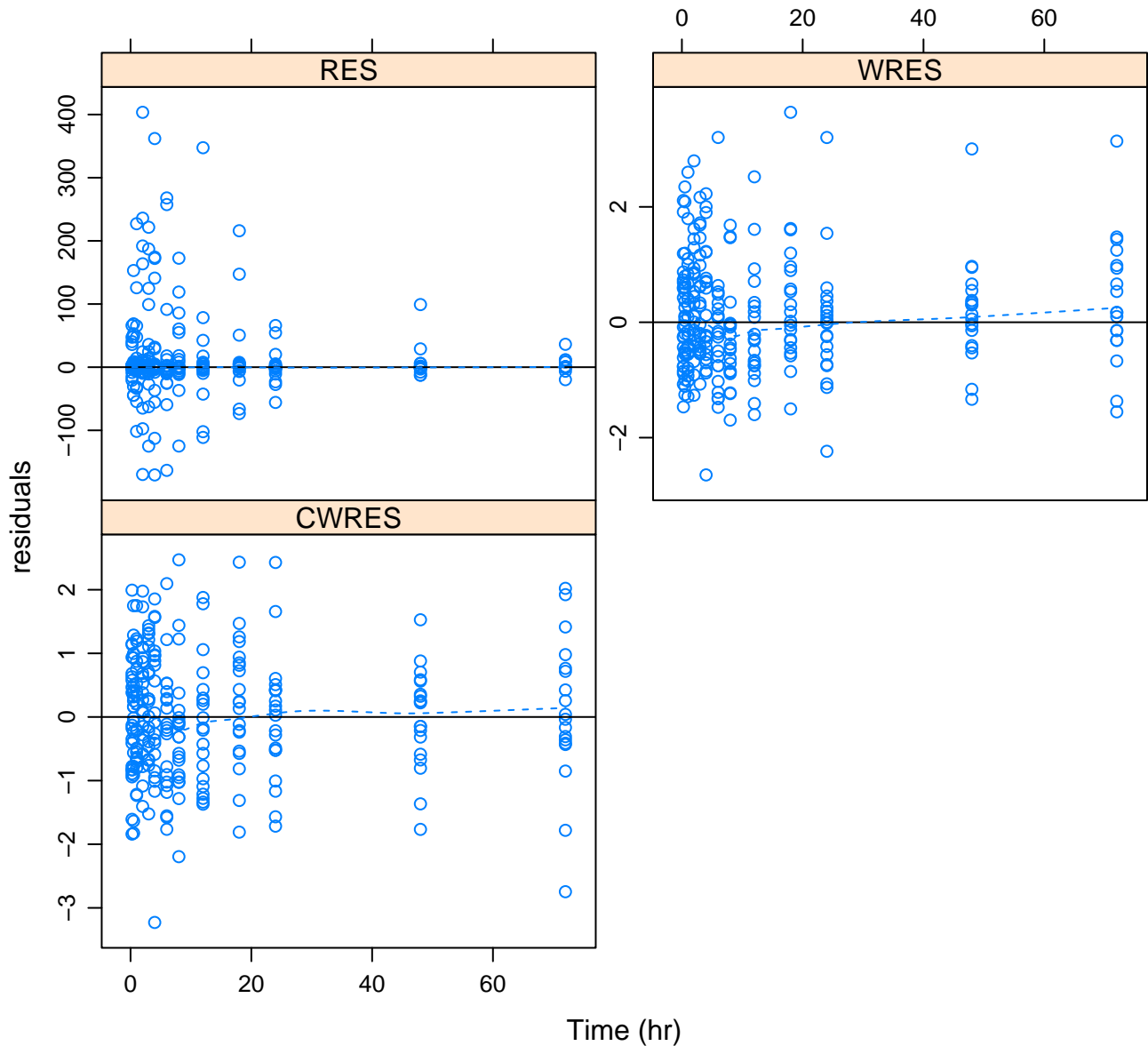


**Model 1005**  
**Residuals vs. Predicted for male data**



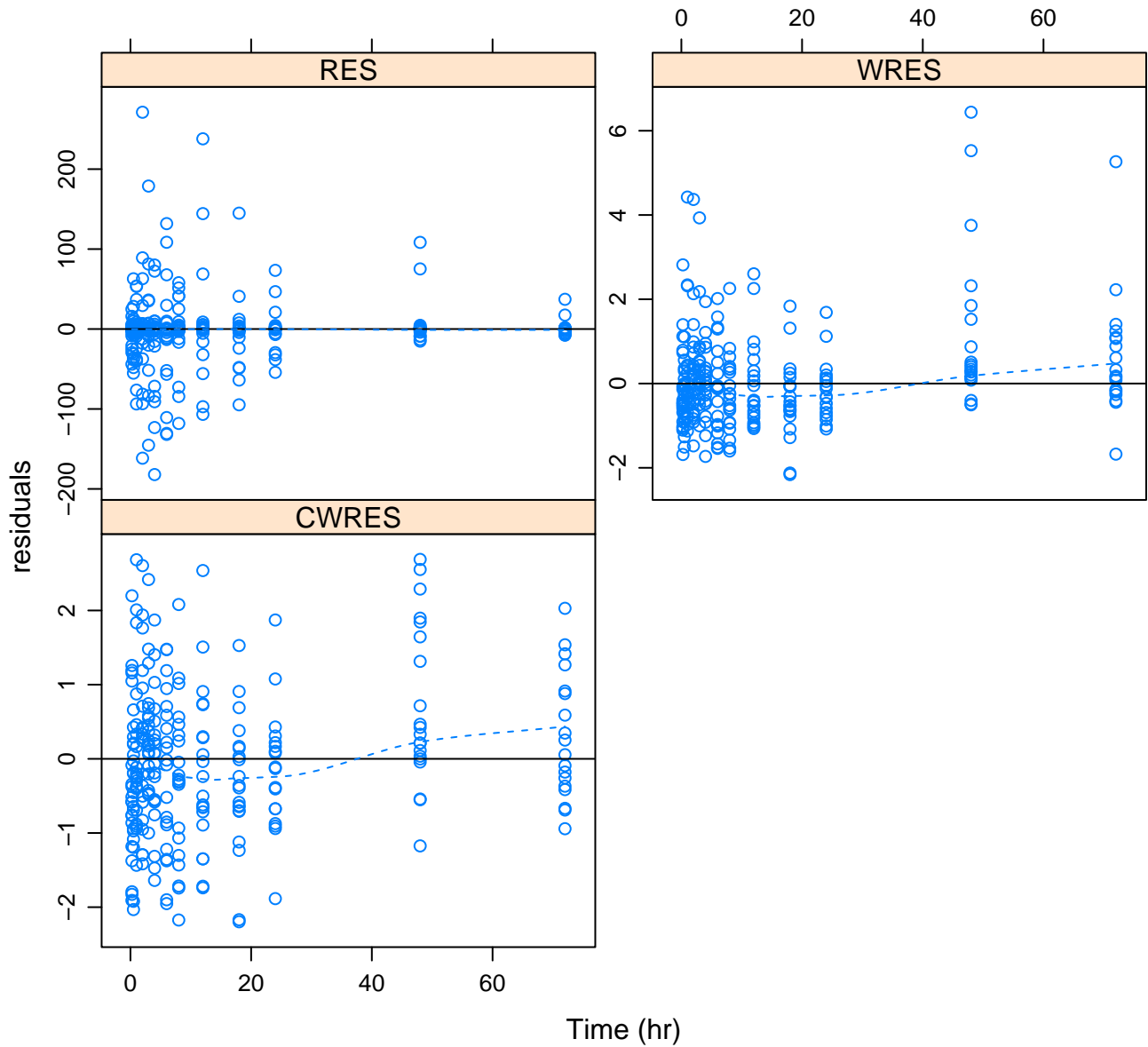
# Model 1005

## Residuals vs. Time for female data



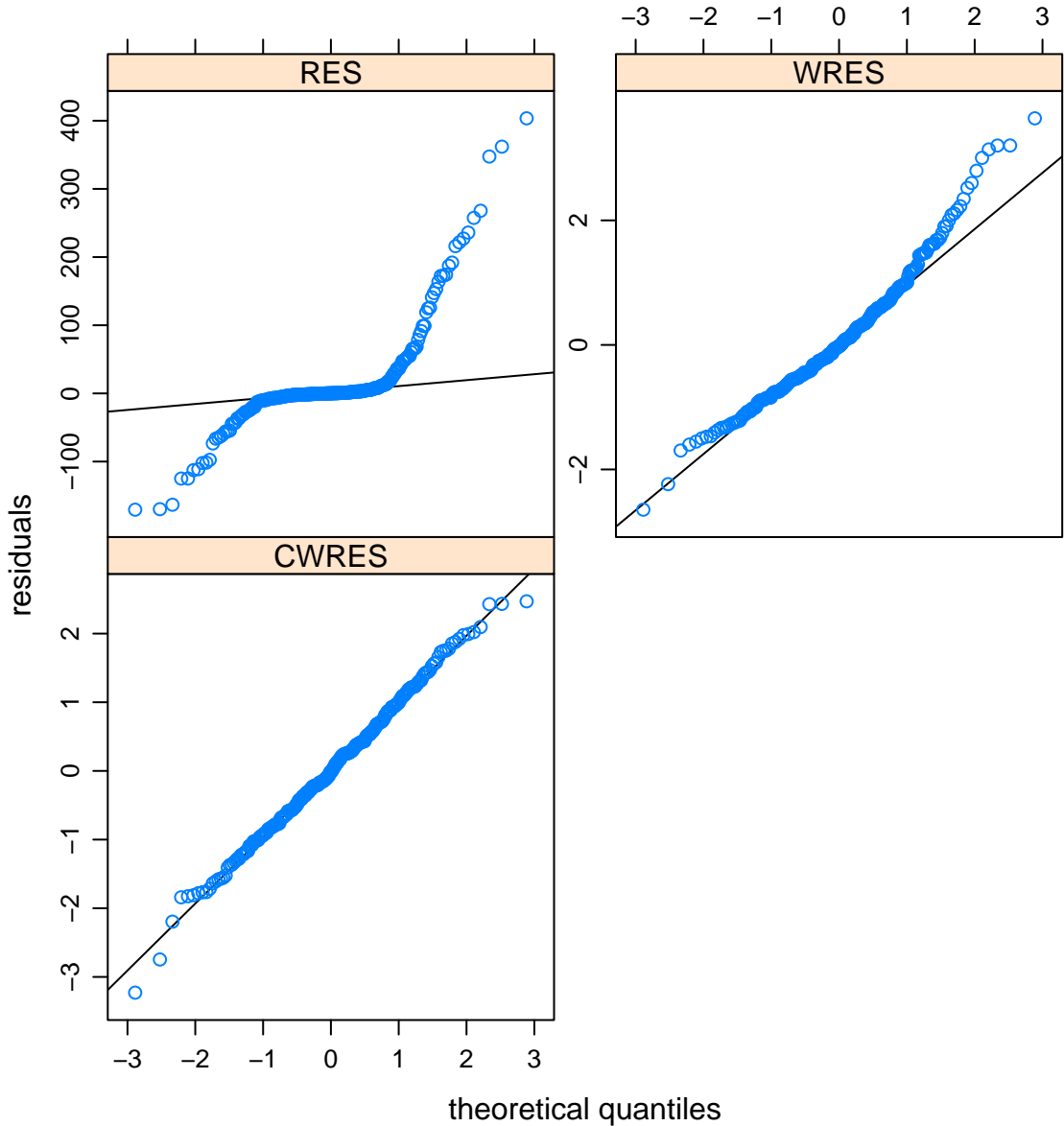
# Model 1005

## Residuals vs. Time for male data



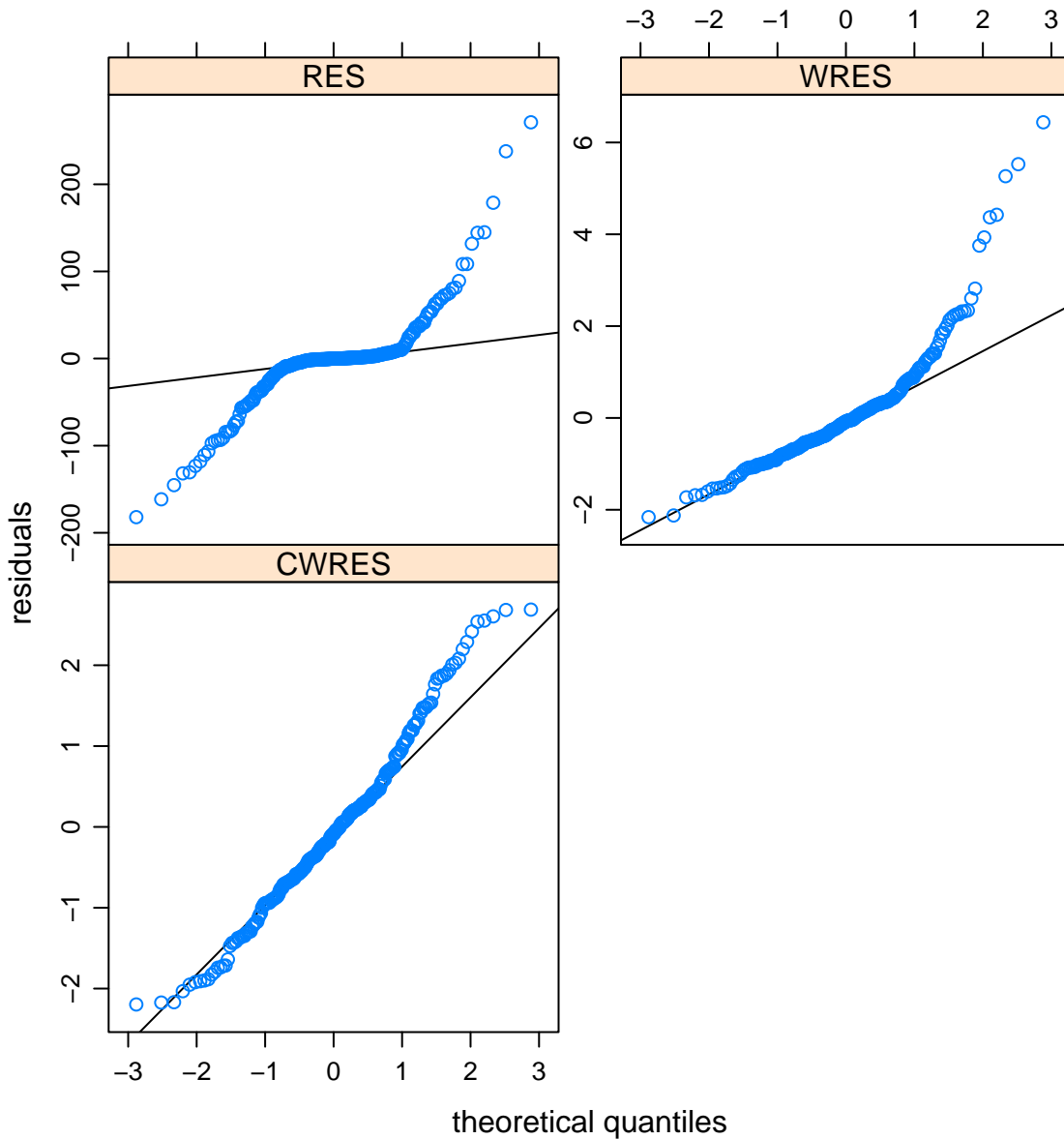
# Model 1005

## Normal Q-Q Plot Residuals for female data

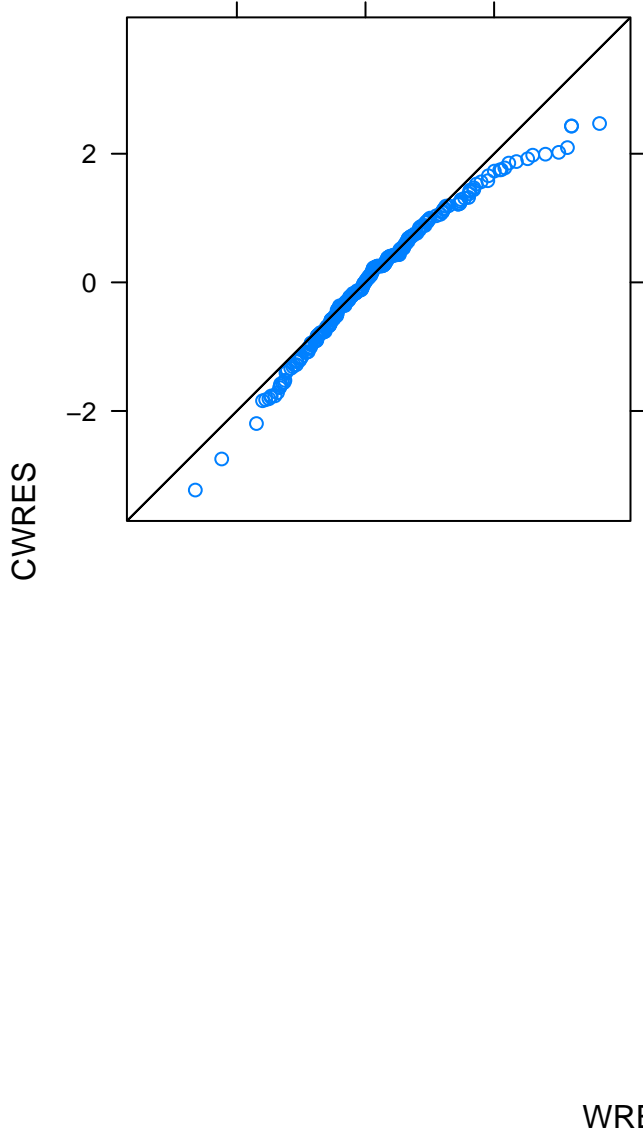


# Model 1005

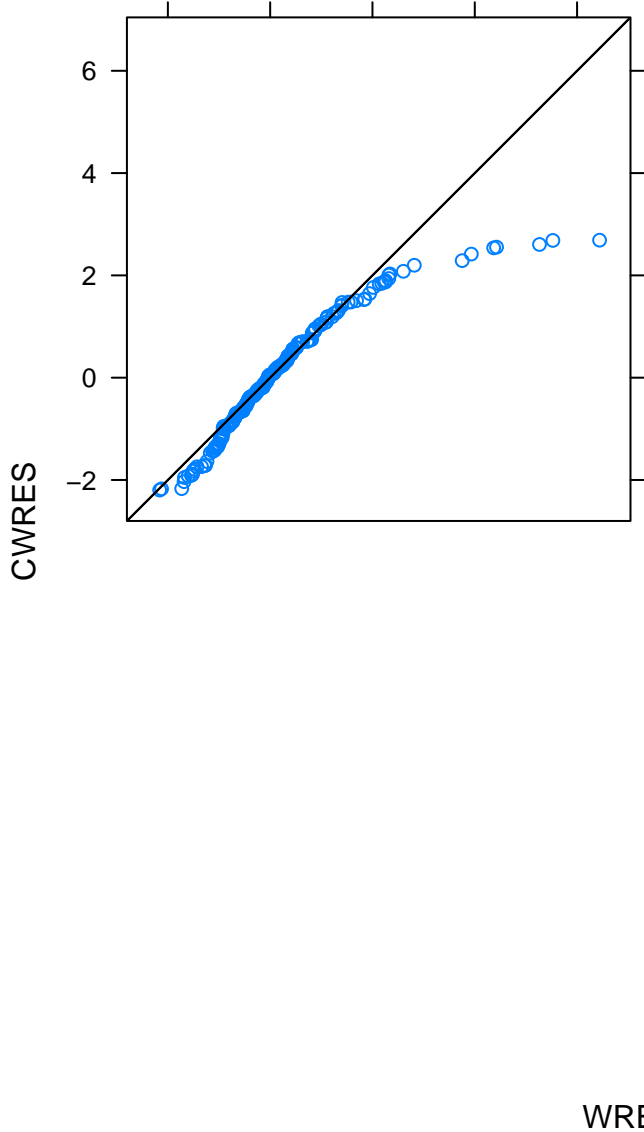
## Normal Q-Q Plot Residuals for male data



**Model 1005**  
**Q-Q Plot of CWRES vs. WRES for female data**

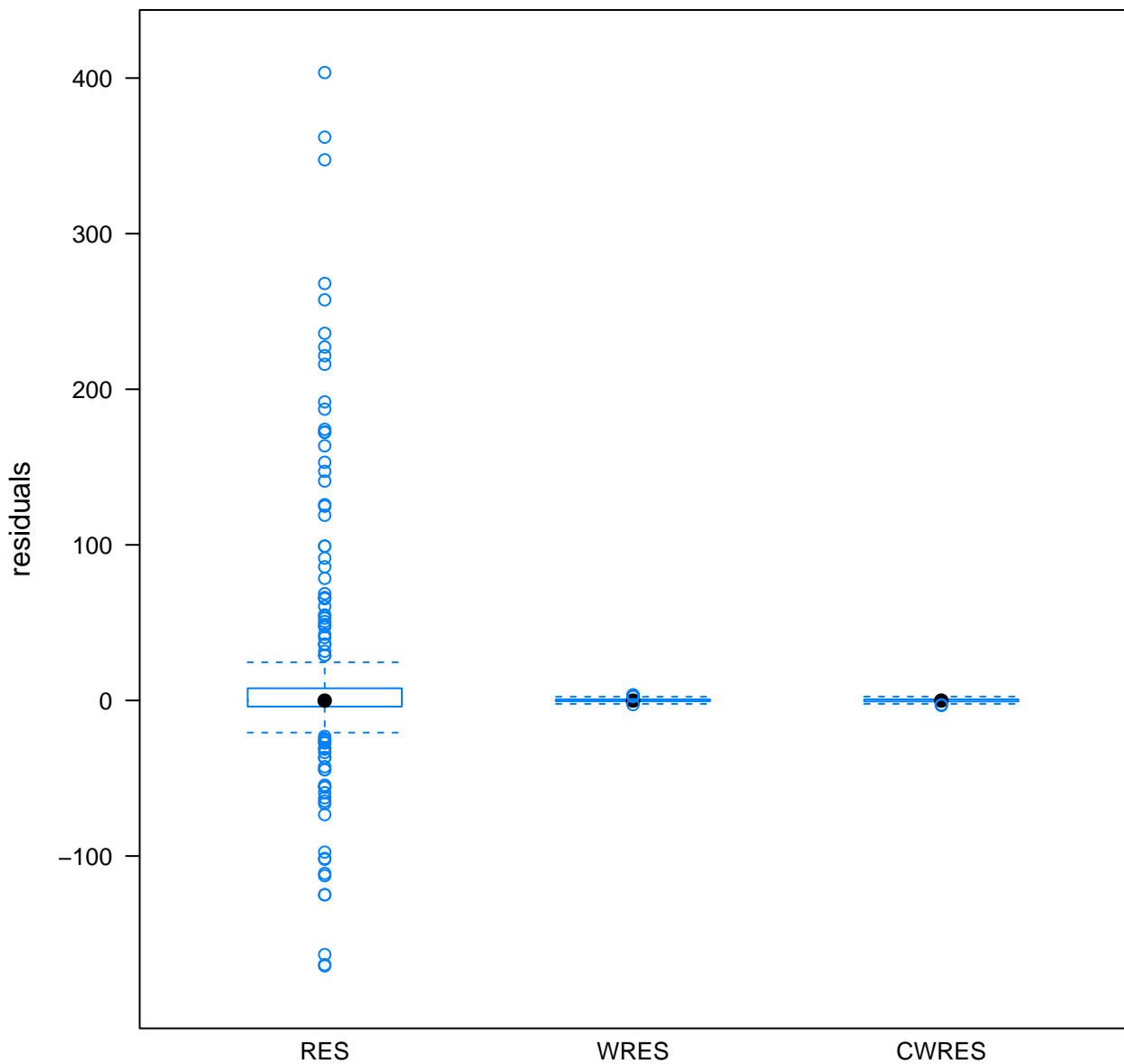


**Model 1005**  
**Q-Q Plot of CWRES vs. WRES for male data**

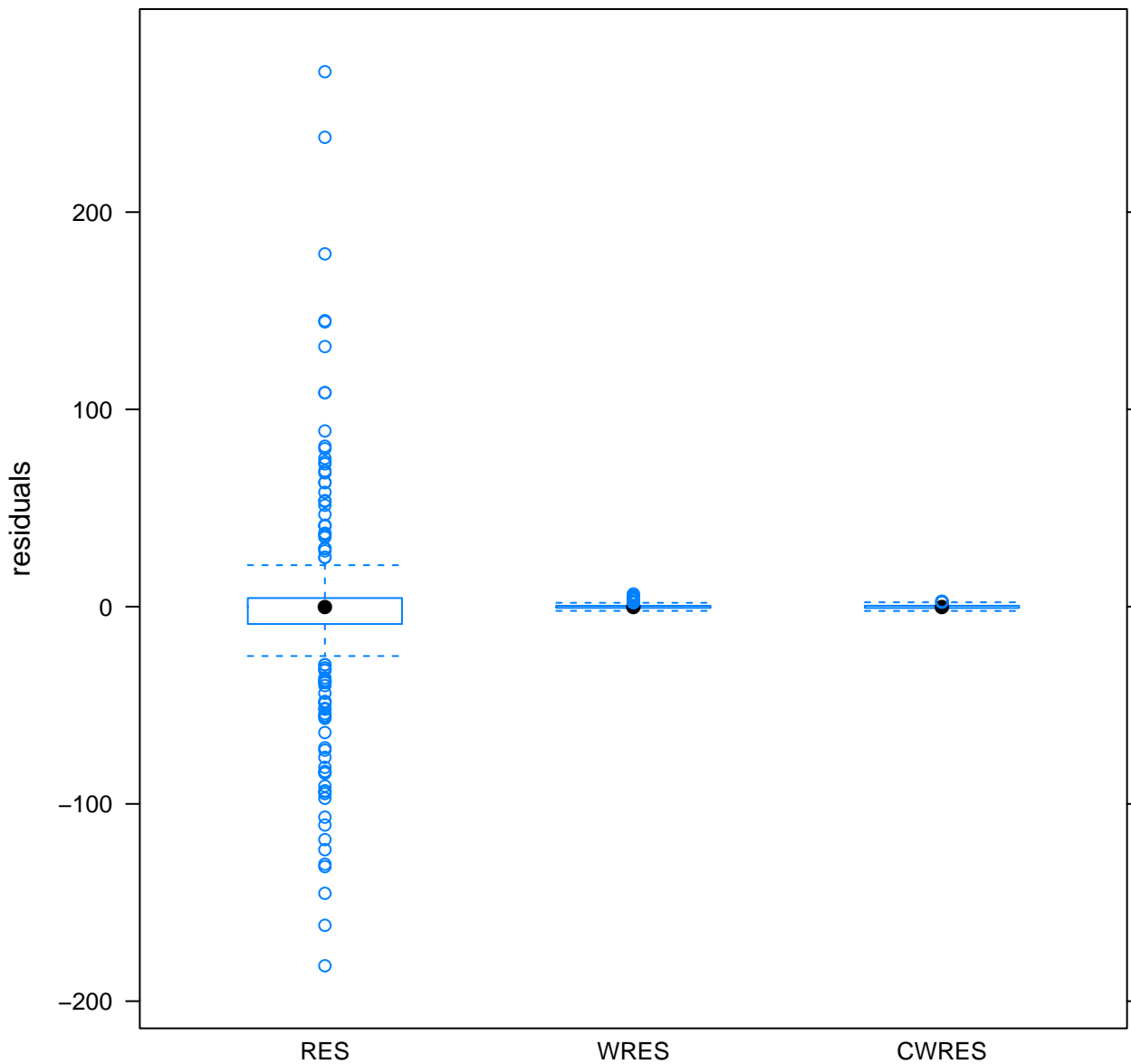




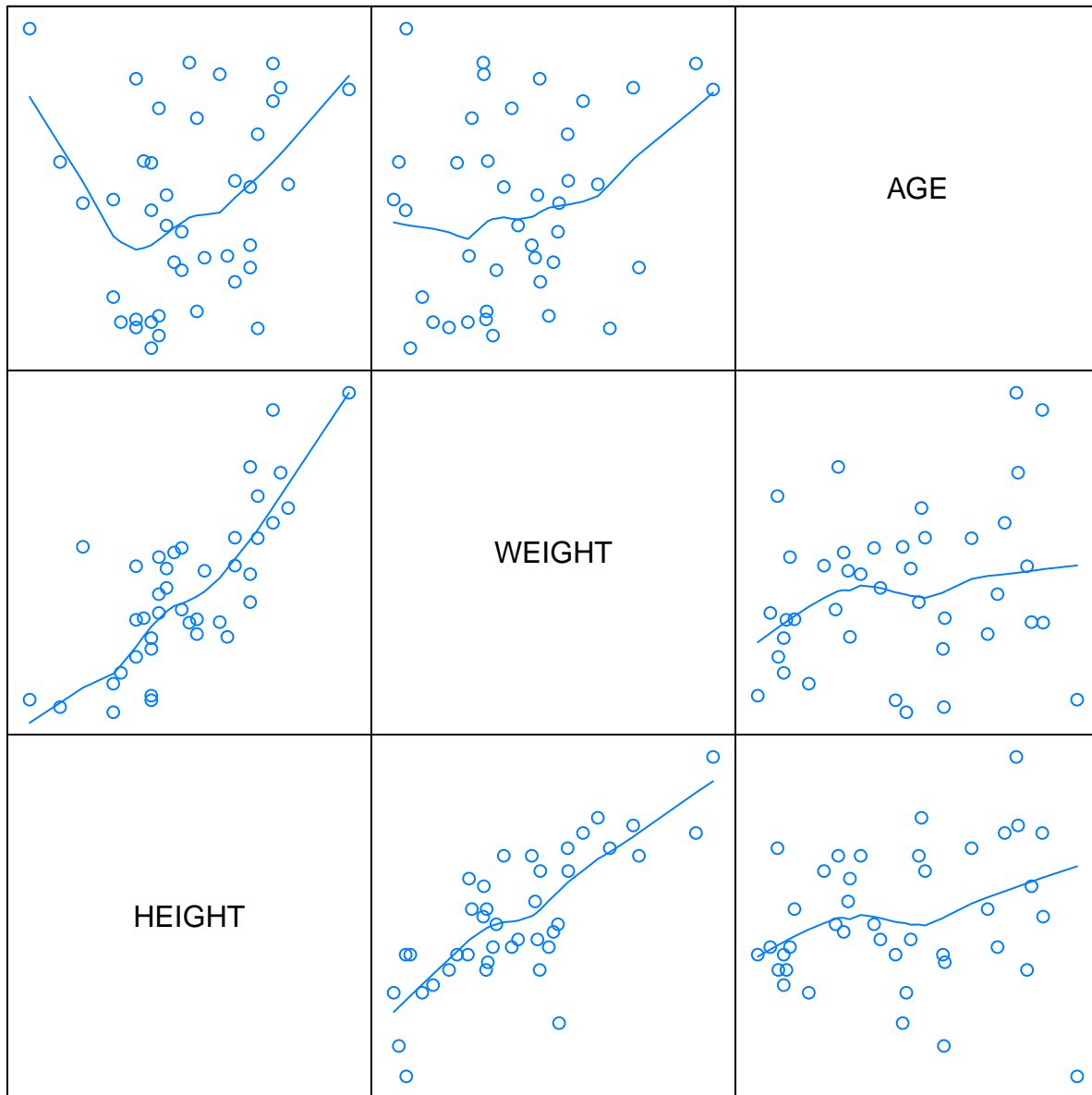
**Model 1005 Boxplots of Residuals for female data**



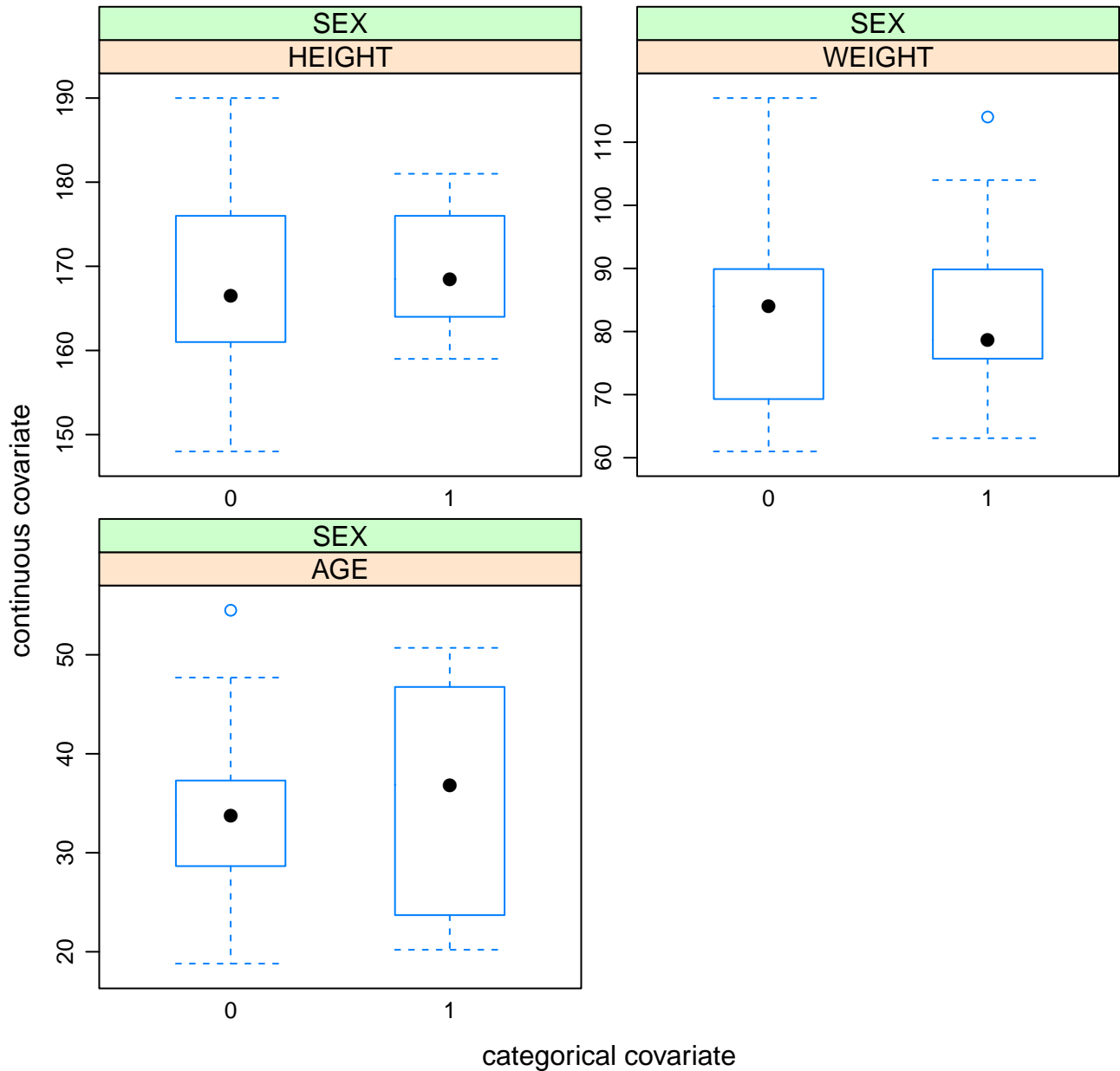
**Model 1005 Boxplots of Residuals for male data**



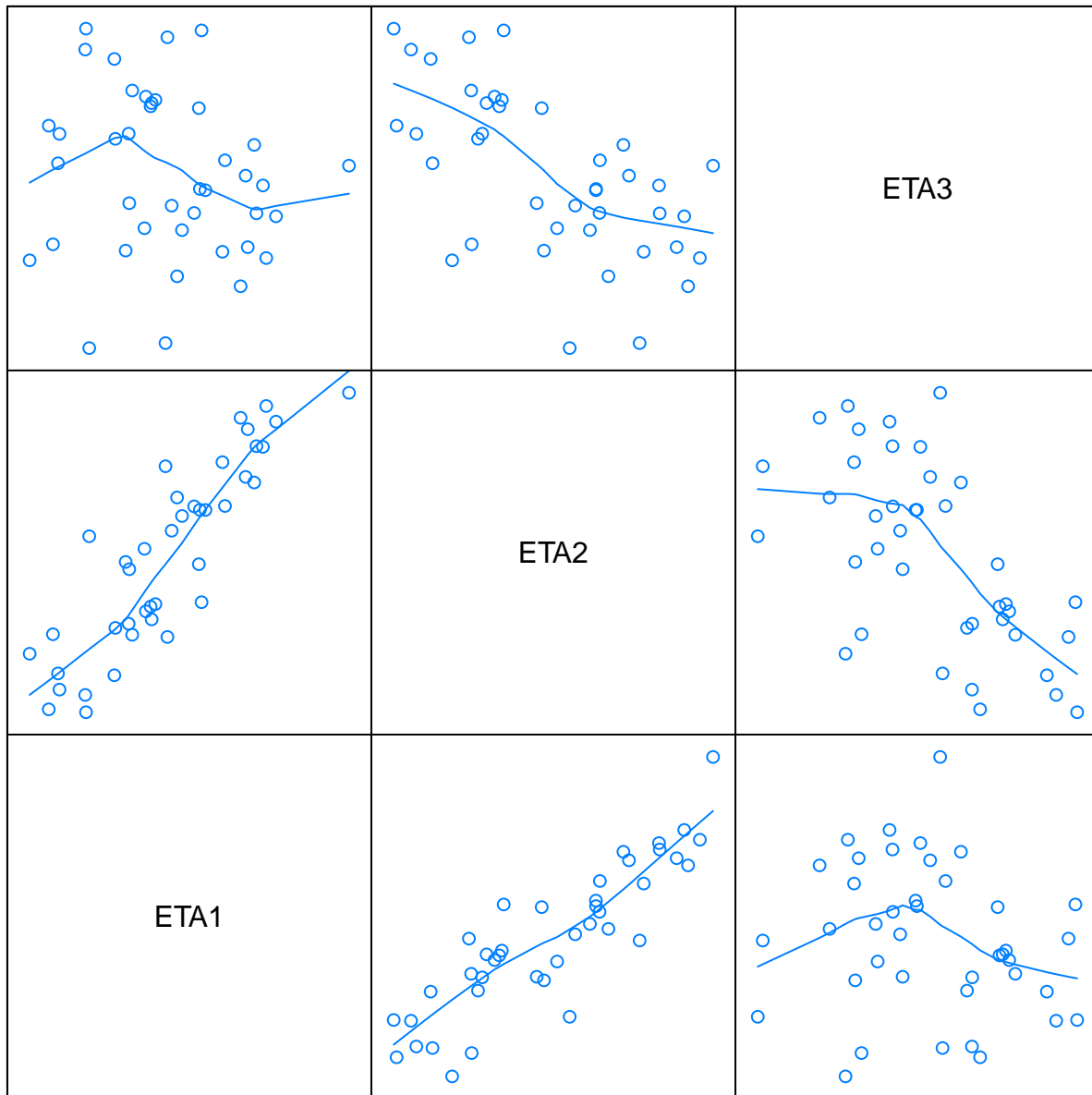
# Covariate Scatterplots



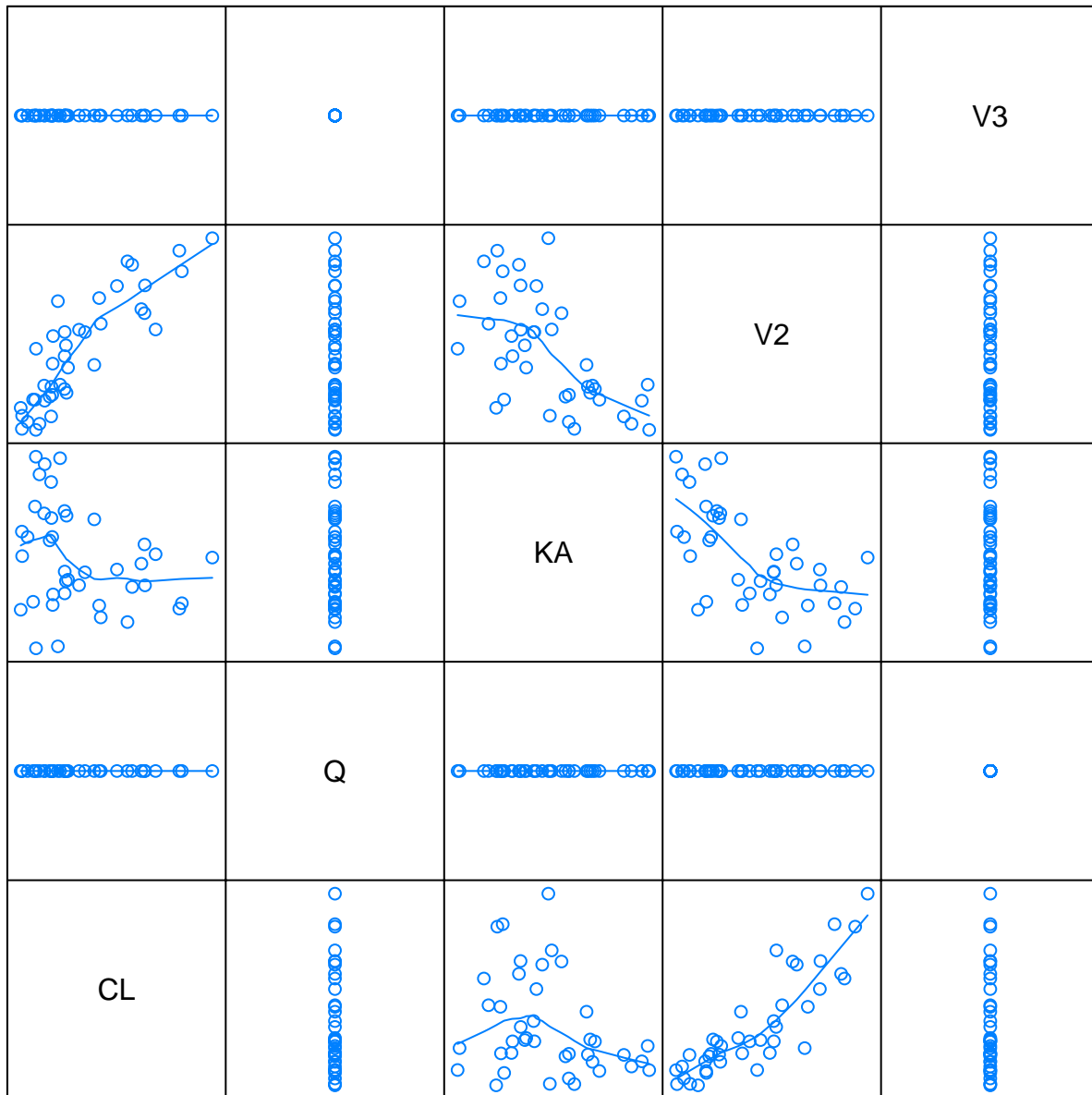
# Continuous Covariates vs. Categorical Covariates



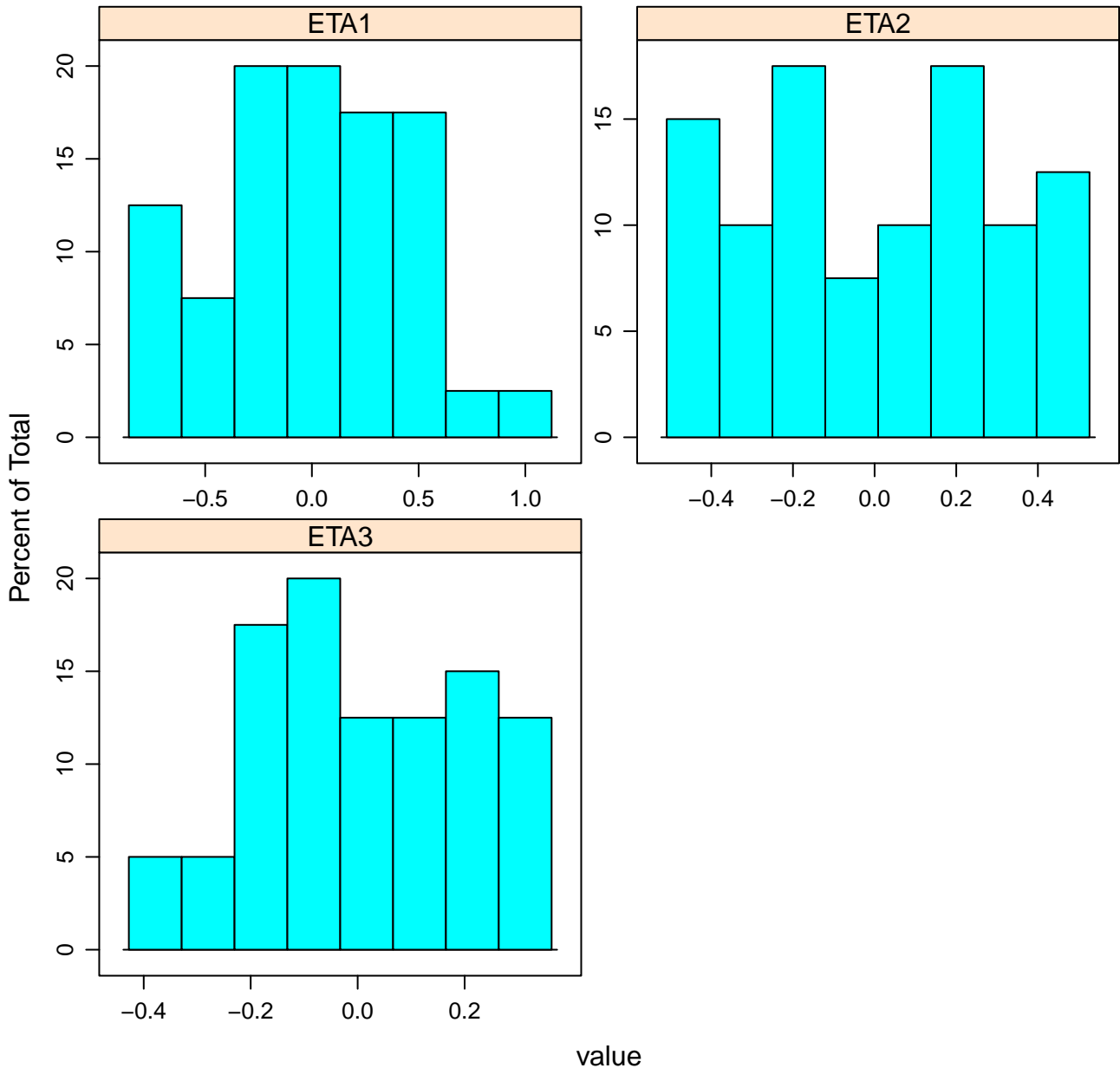
# ETA Scatterplots



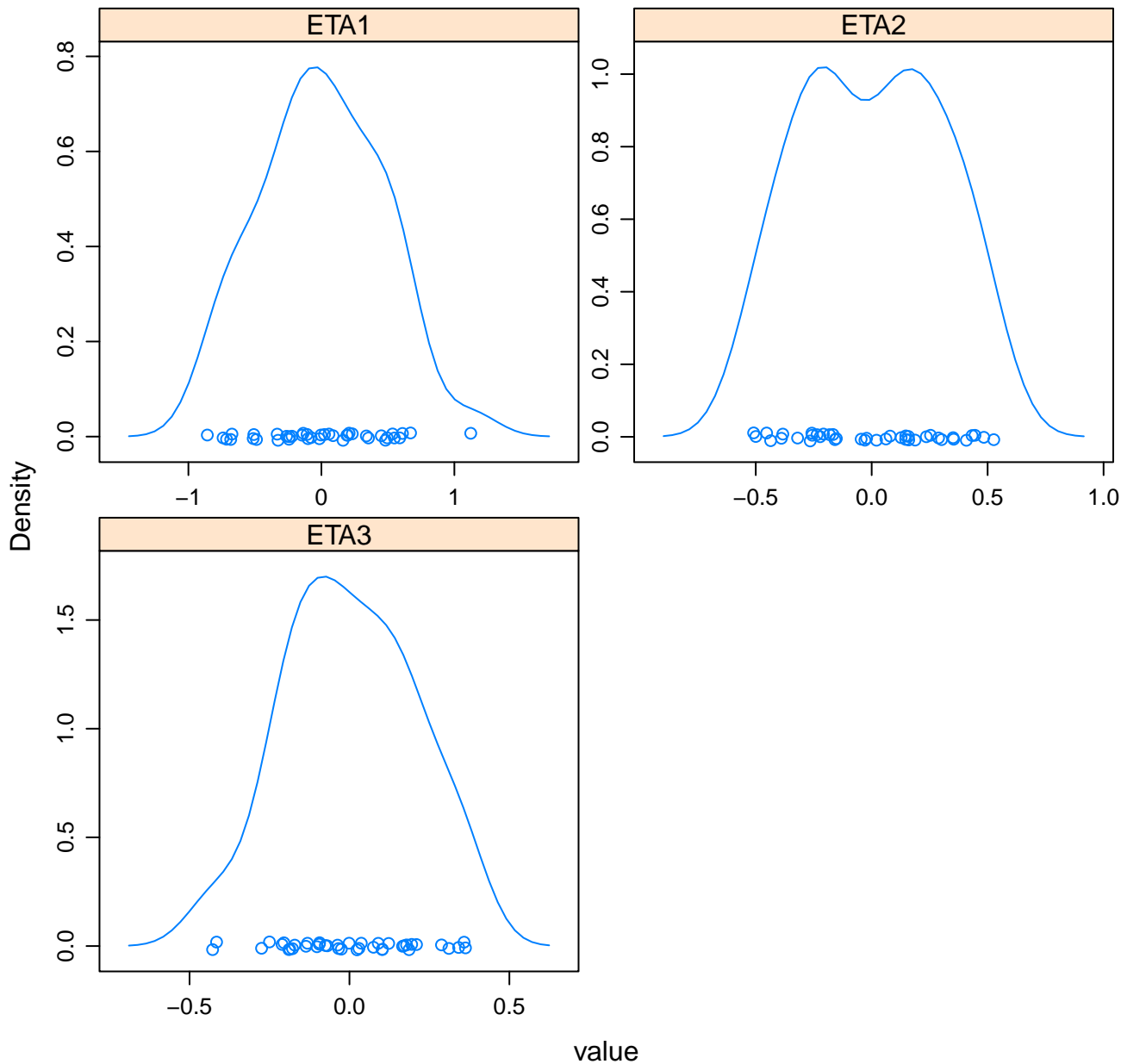
# Parameter Scatterplots



# Histograms of Etas

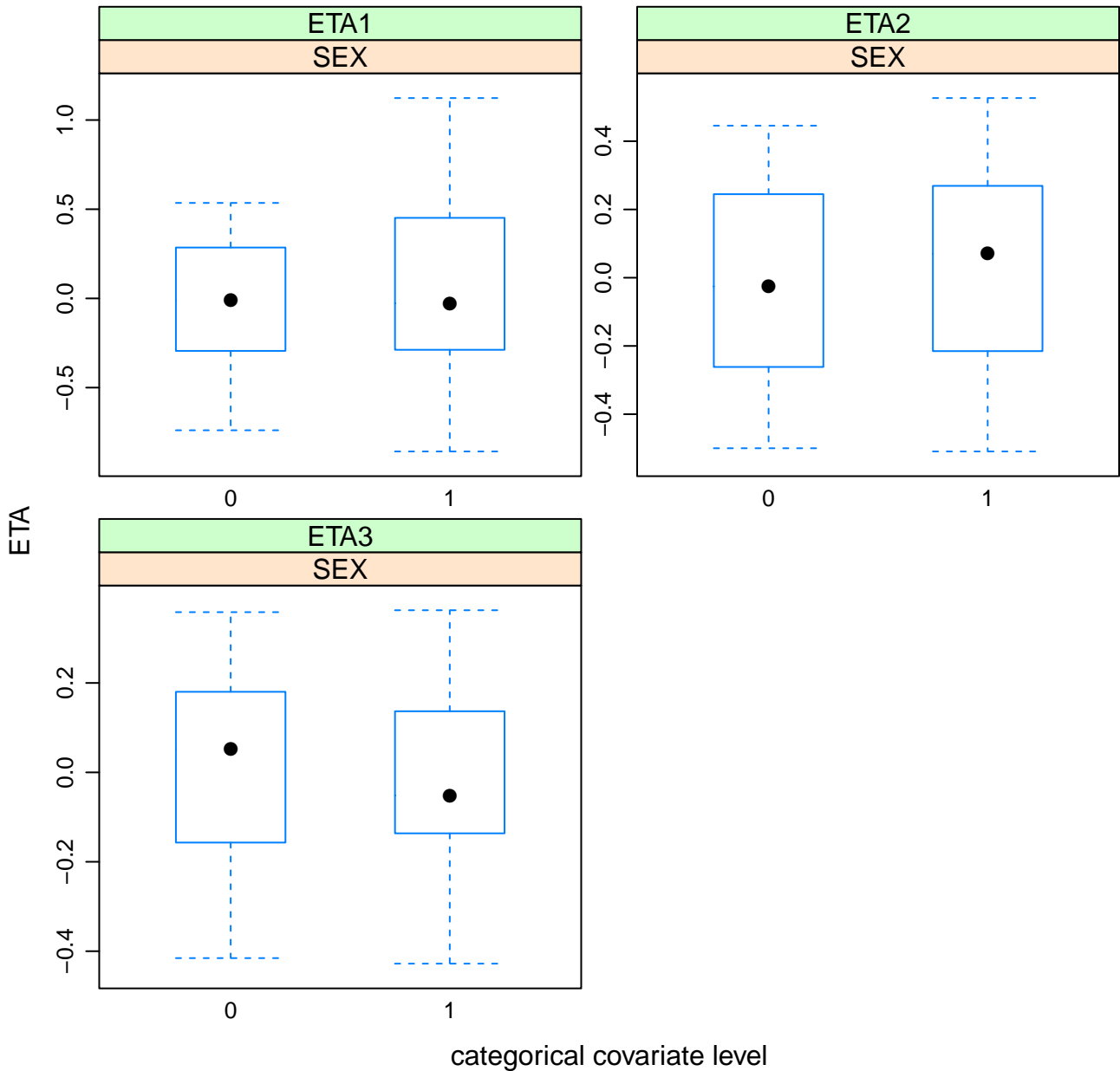


# Density of Etas

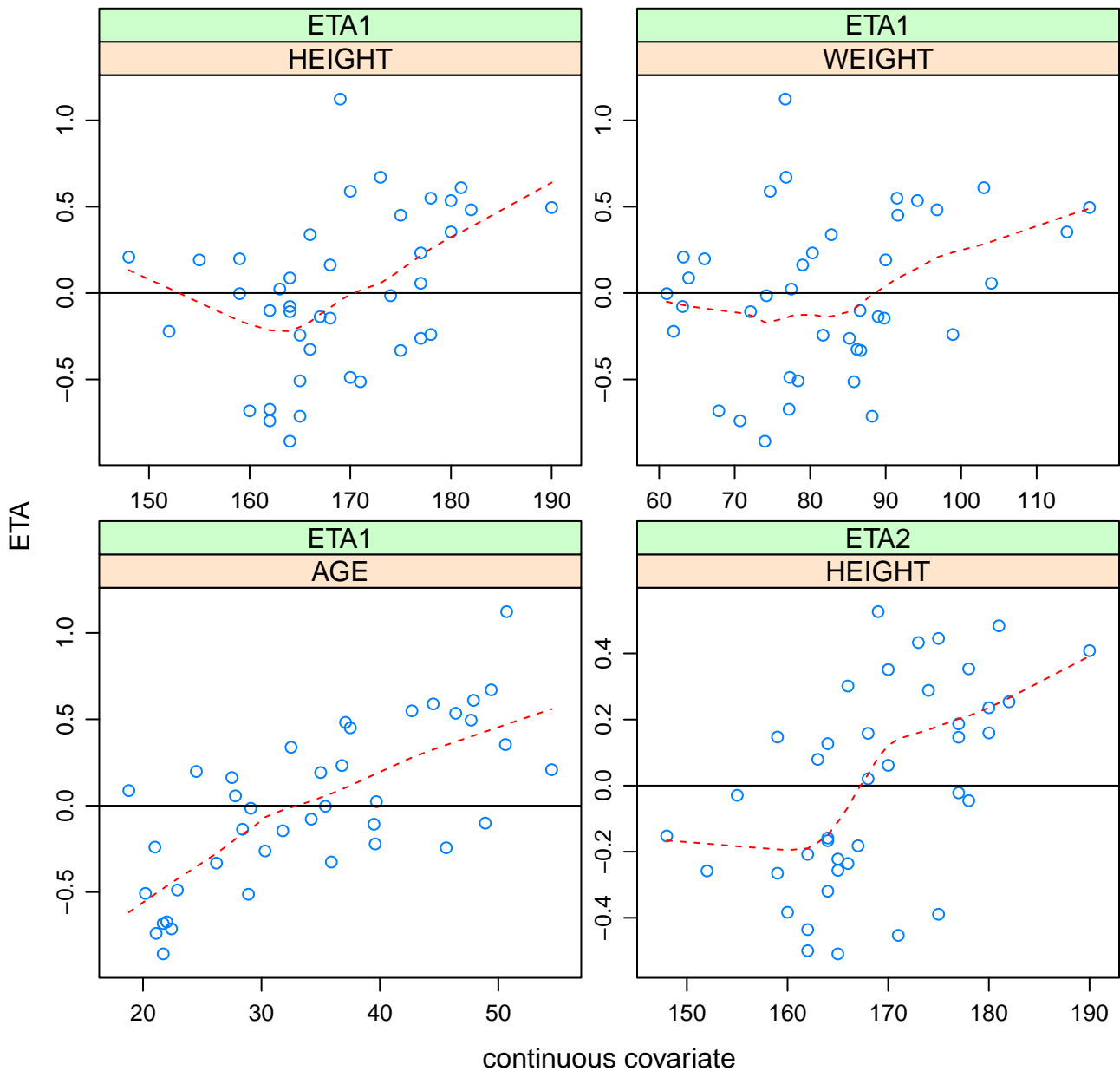




# Boxplots of Etas by Categorical Covariate

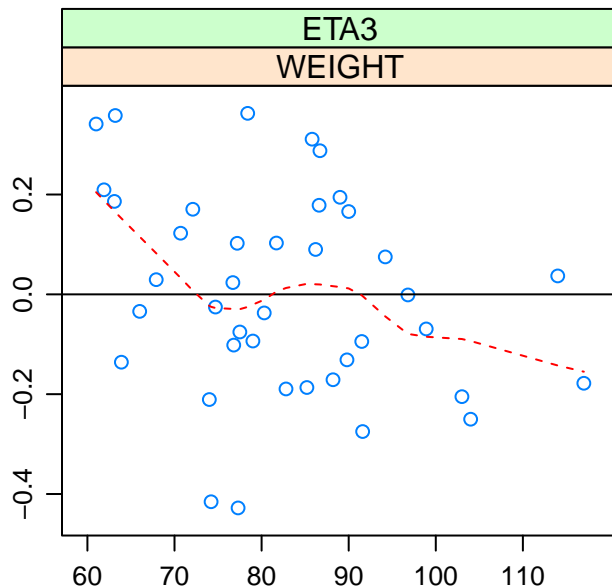
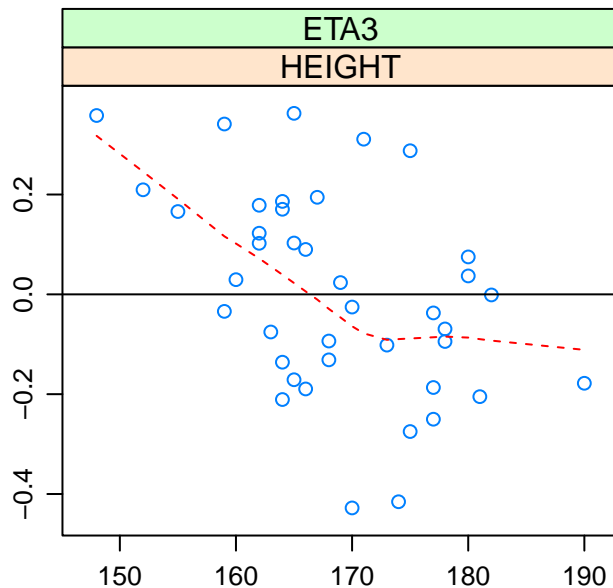
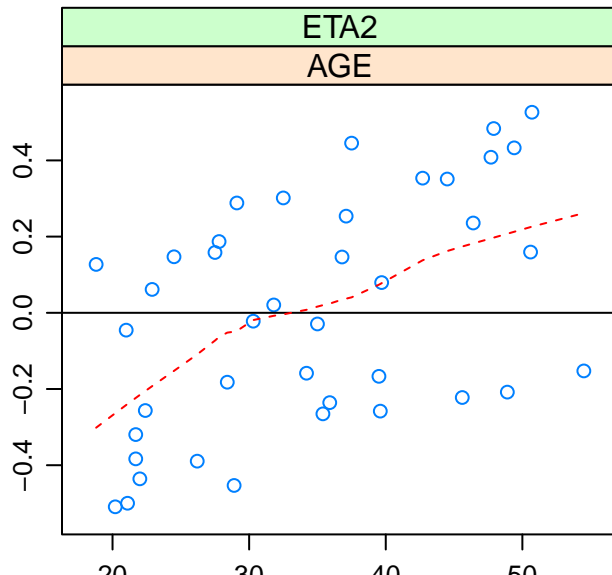
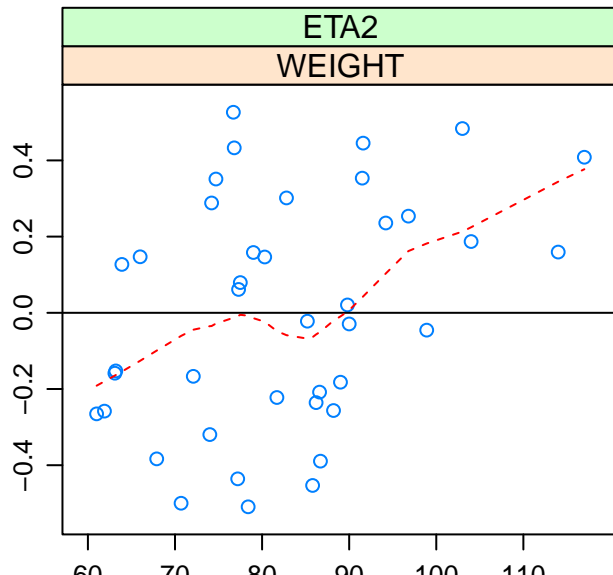


# Etas vs. Continuous Covariates



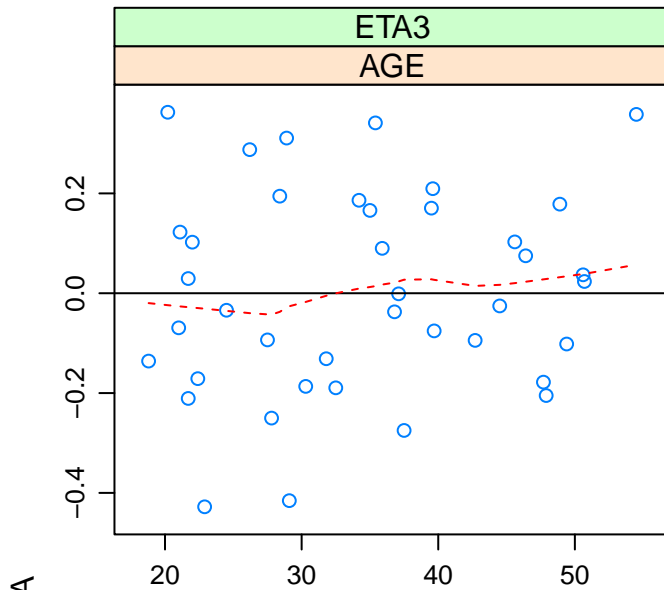
# Etas vs. Continuous Covariates

ETA



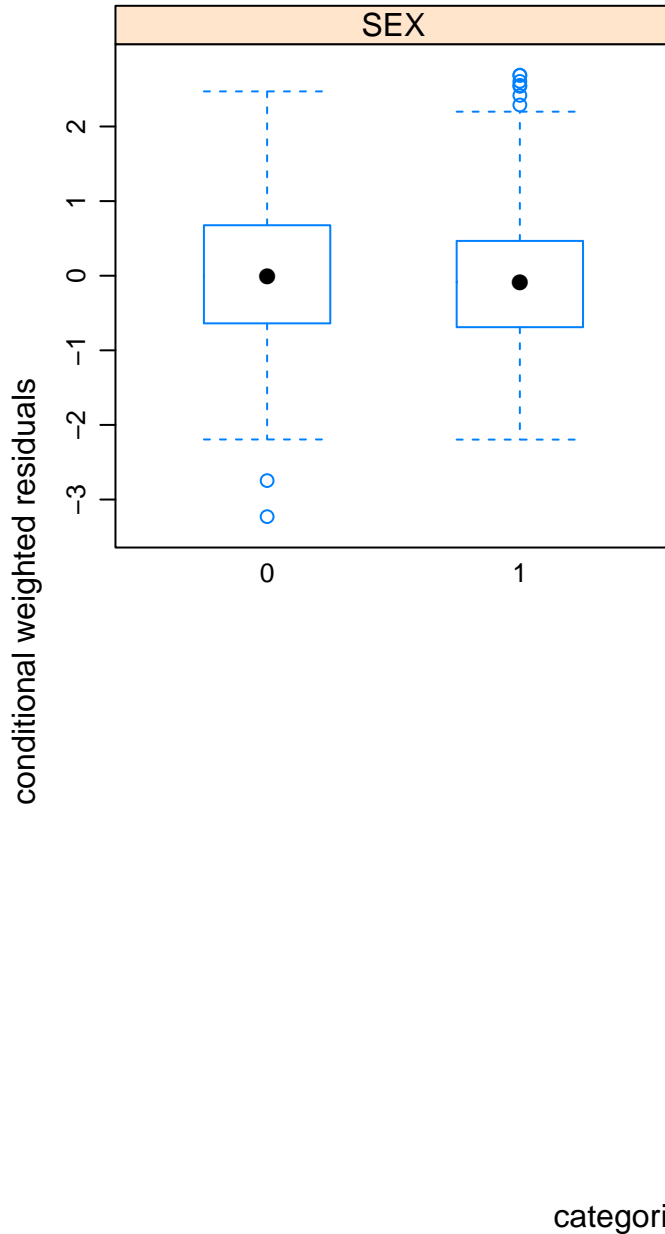
continuous covariate

# Etas vs. Continuous Covariates

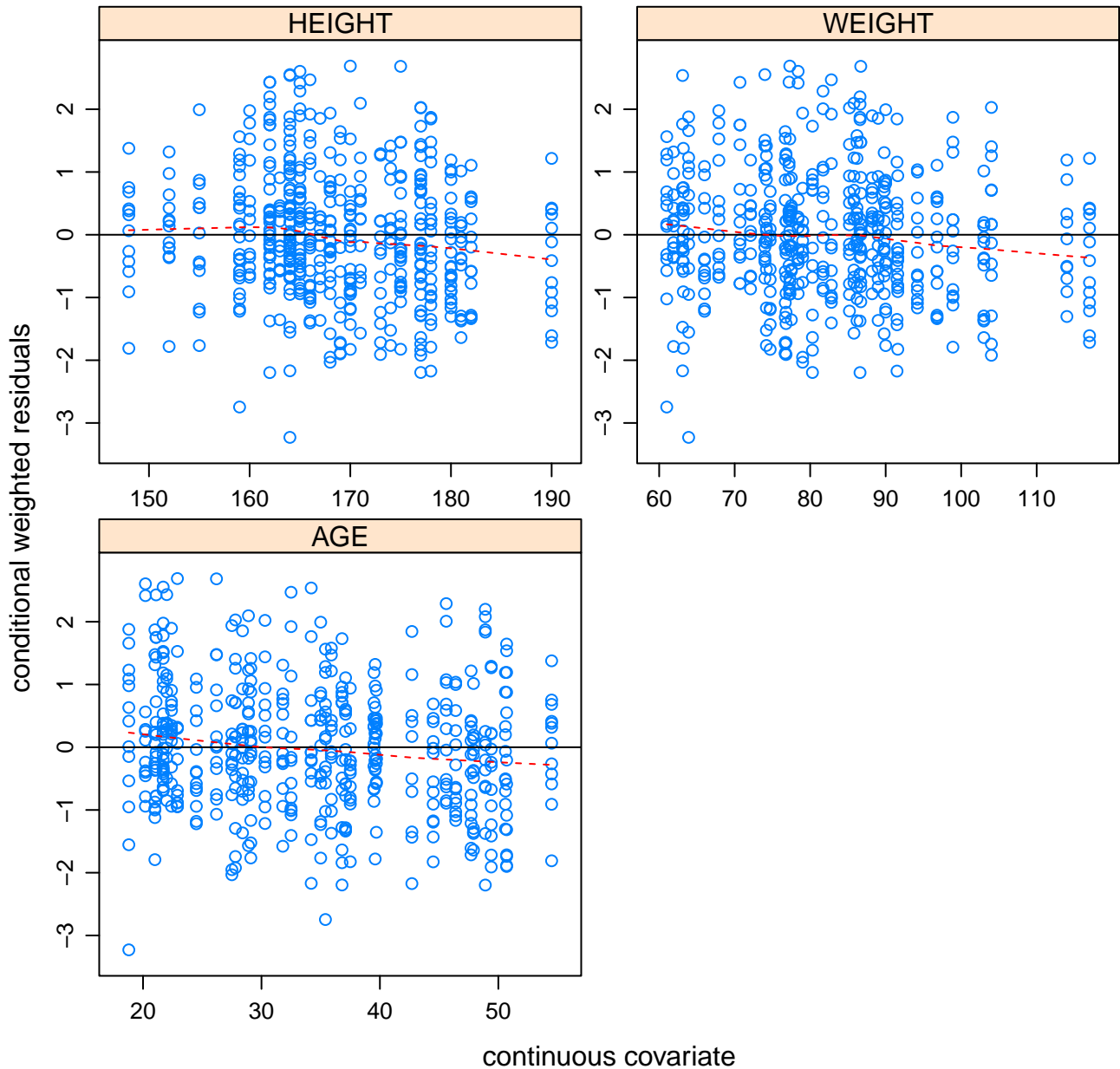


continuous covariate

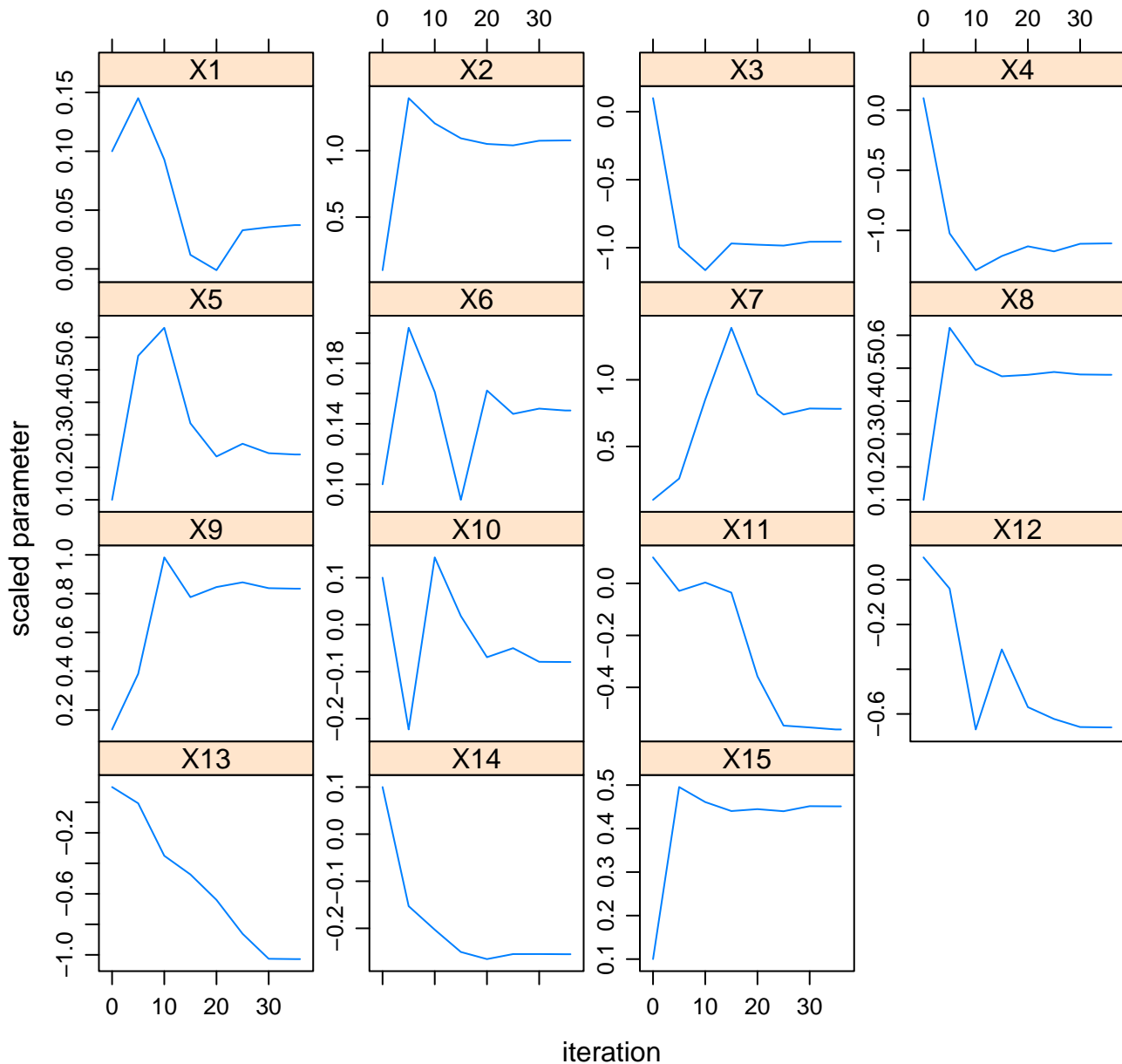
# CWRES vs. Categorical Covariates



# CWRES vs. Continuous Covariates



# Model 1005 parameter search



# Model 1005 gradient search

