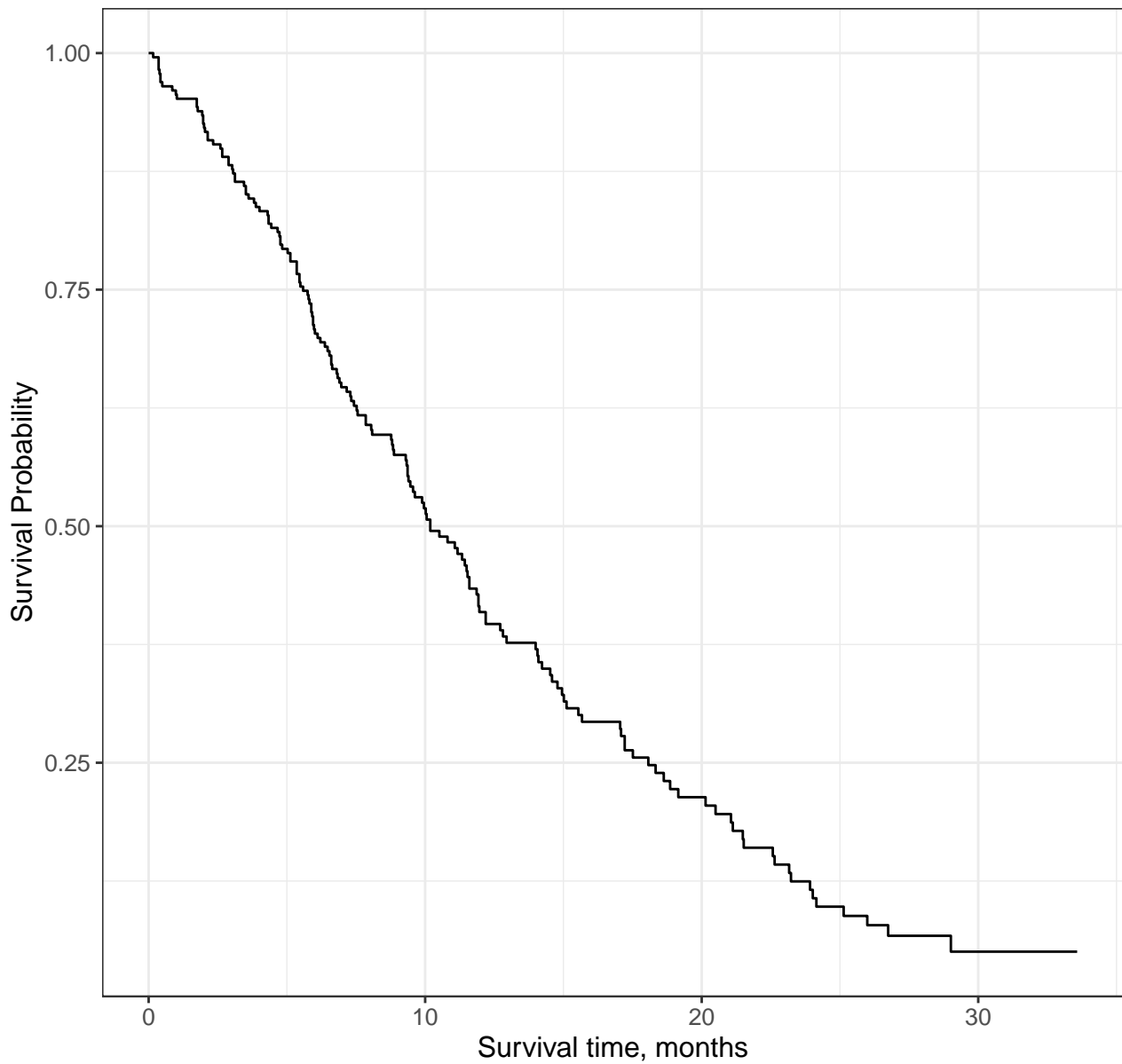


Asymptomatic  
Asymptomatic and ambulatory

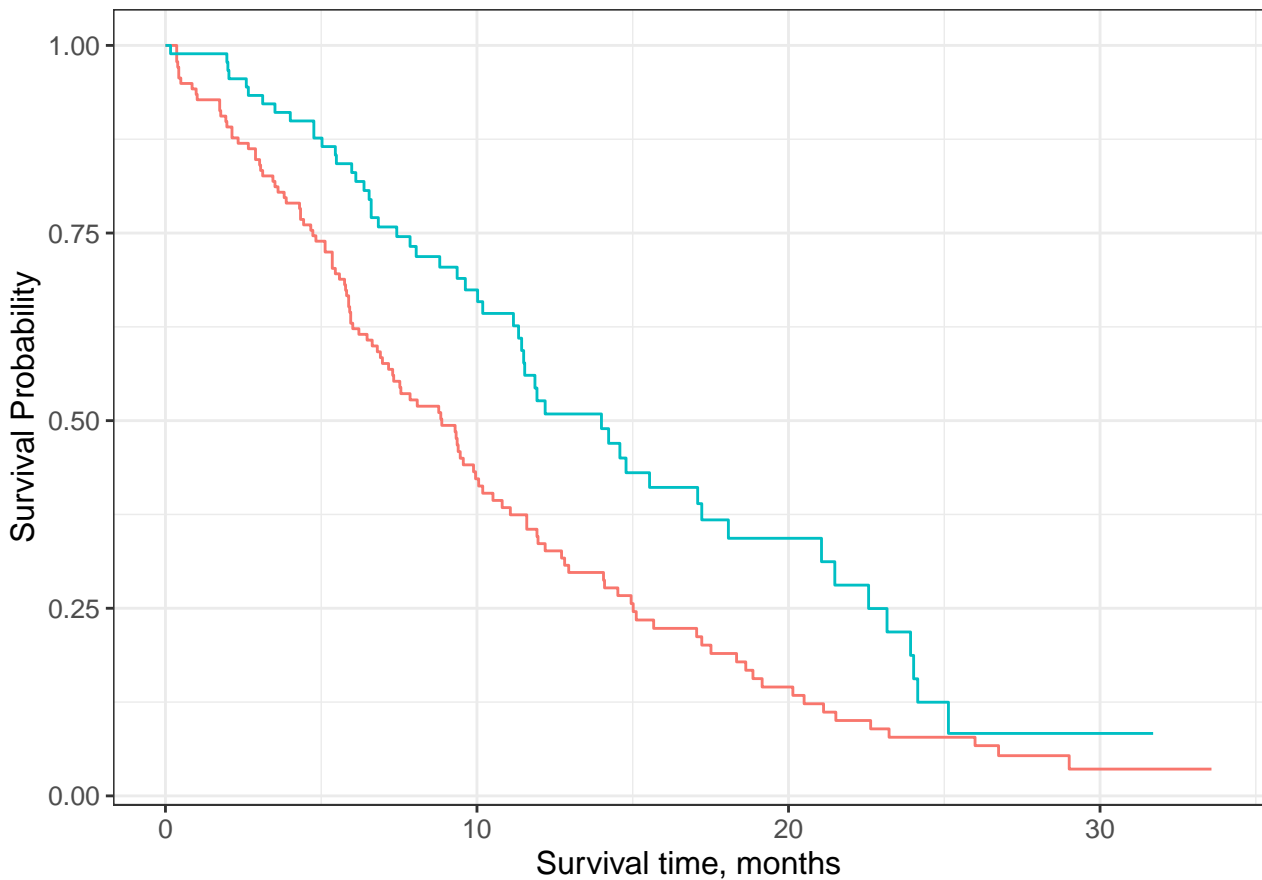
Male, In bed <50% of the day  
Male, In bed > 50% of the day

Female, Asymptomatic  
Female, Symptomatic and ambulatory

Female, Asymptomatic and ambulatory  
Female, Symptomatic



At Risk	228	87	24	3
Events	0	103	148	165



— Male — Female

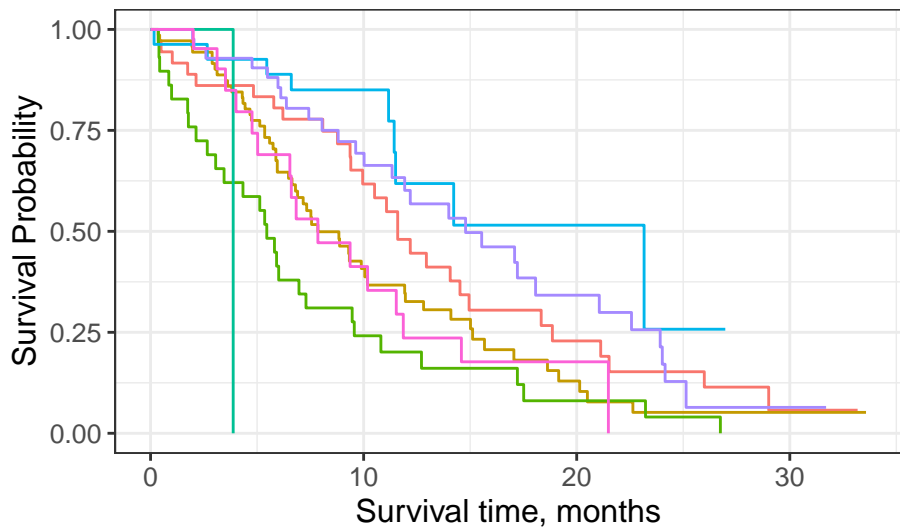
#### Male

At Risk	138	44	13	2
Events	0	76	103	112

#### Female

At Risk	90	43	11	1
Events	0	27	45	53





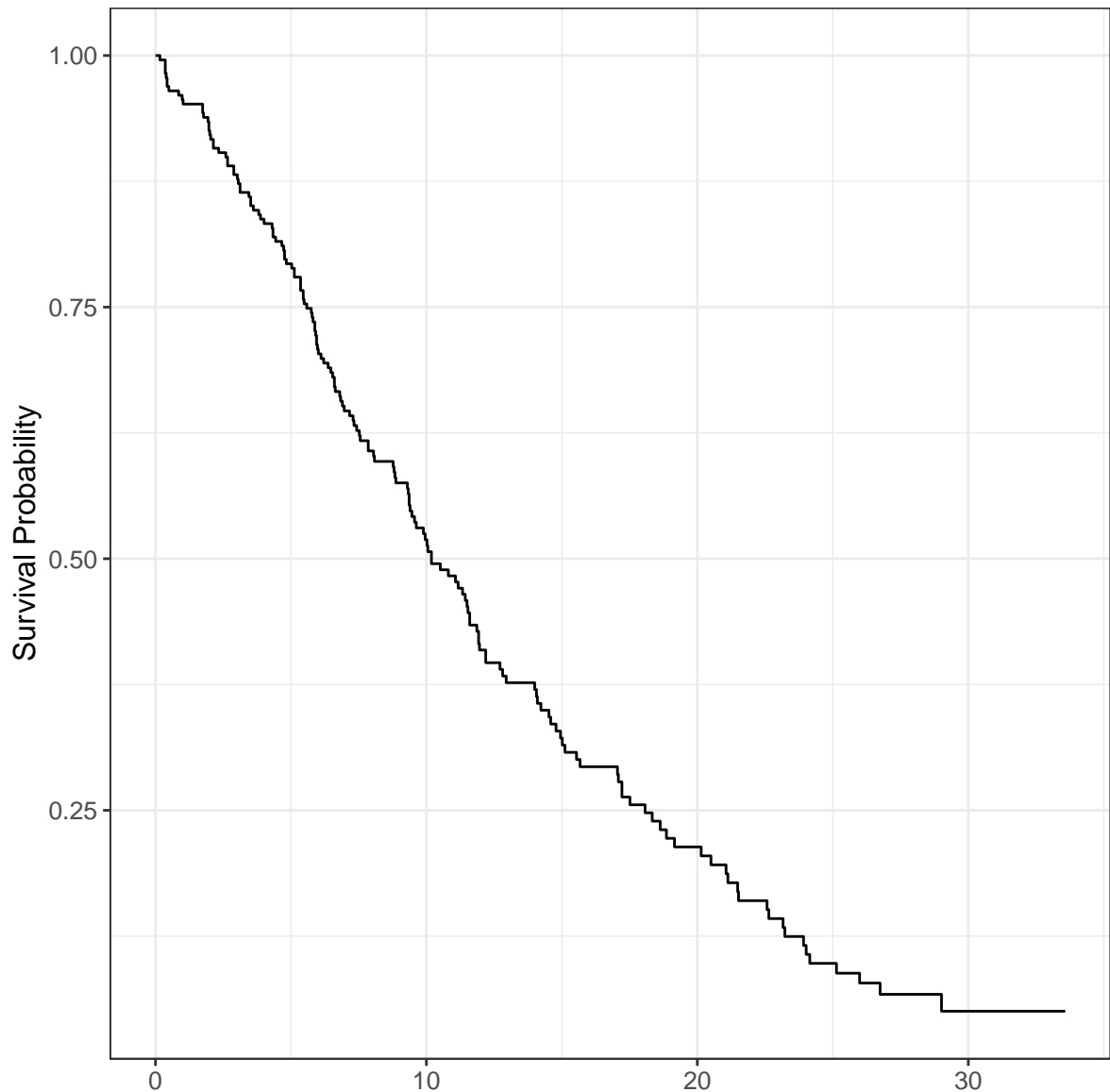
— Male, Asymptomatic     
 — Male, In bed <50% of the day     
 — Female, Asymptomatic  
— Male, Symptomatic and ambulatory     
 — Male, In bed > 50% of the day     
 — Female, Symptomatic and ambulatory

#### At Risk

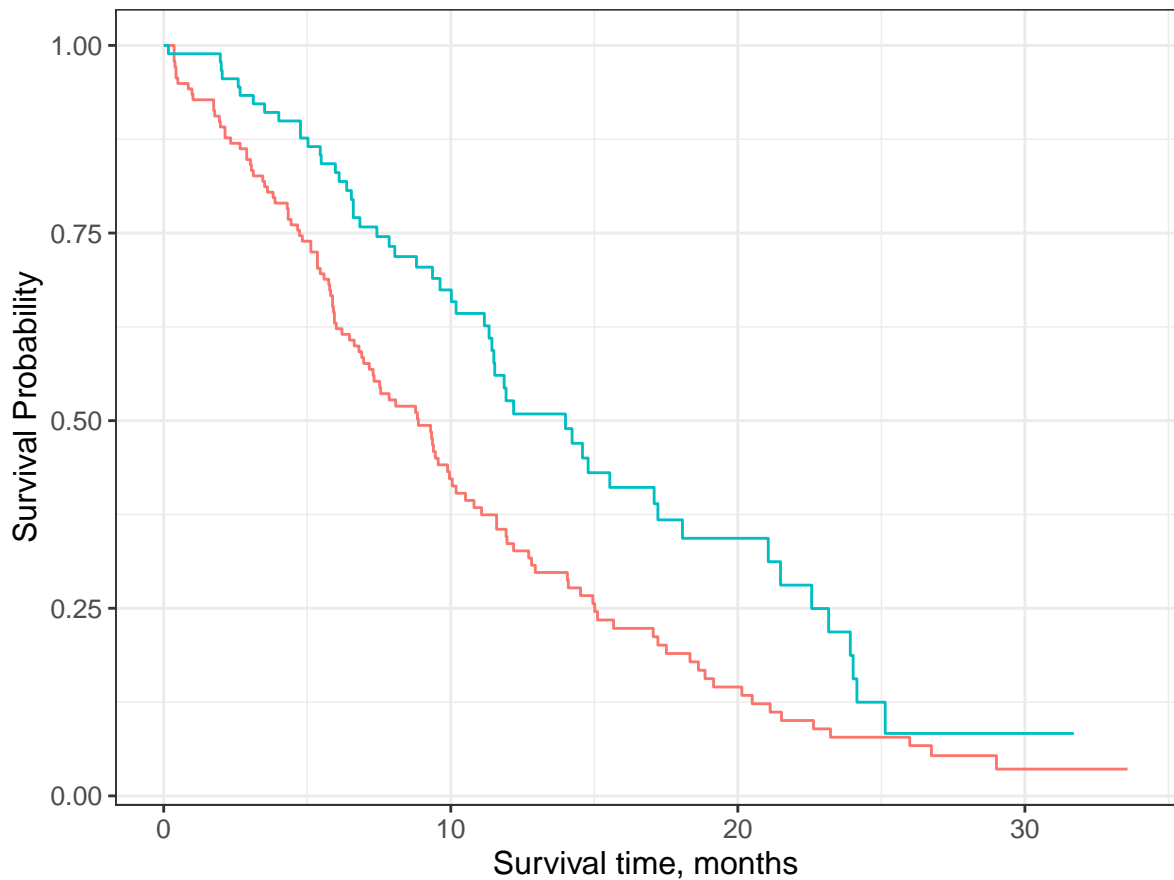
Male, Asymptomatic	36	18	6	1
Male, Symptomatic and ambulatory	71	20	5	1
Male, In bed <50% of the day	29	6	2	0
Male, In bed > 50% of the day	1	0	0	0
Female, Asymptomatic	27	13	2	0
Female, Symptomatic and ambulatory	42	23	8	1
Female, In bed <50% of the day	21	7	1	0

#### Events

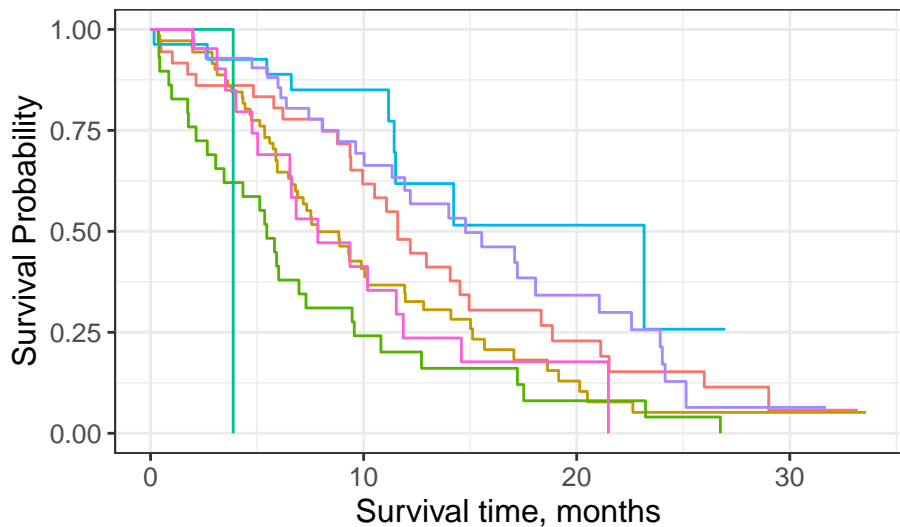
Male, Asymptomatic	0	13	24	28
Male, Symptomatic and ambulatory	0	39	51	54
Male, In bed <50% of the day	0	22	26	28
Male, In bed > 50% of the day	0	1	1	1
Female, Asymptomatic	0	4	8	9
Female, Symptomatic and ambulatory	0	12	22	28
Female, In bed <50% of the day	0	11	15	16



At Risk	228	87	24	3
CUM EVENTS	0	103	148	165



Male				
At Risk	138	44	13	2
CUM EVENTS	0	76	103	112
Female				
At Risk	90	43	11	1
CUM EVENTS	0	27	45	53



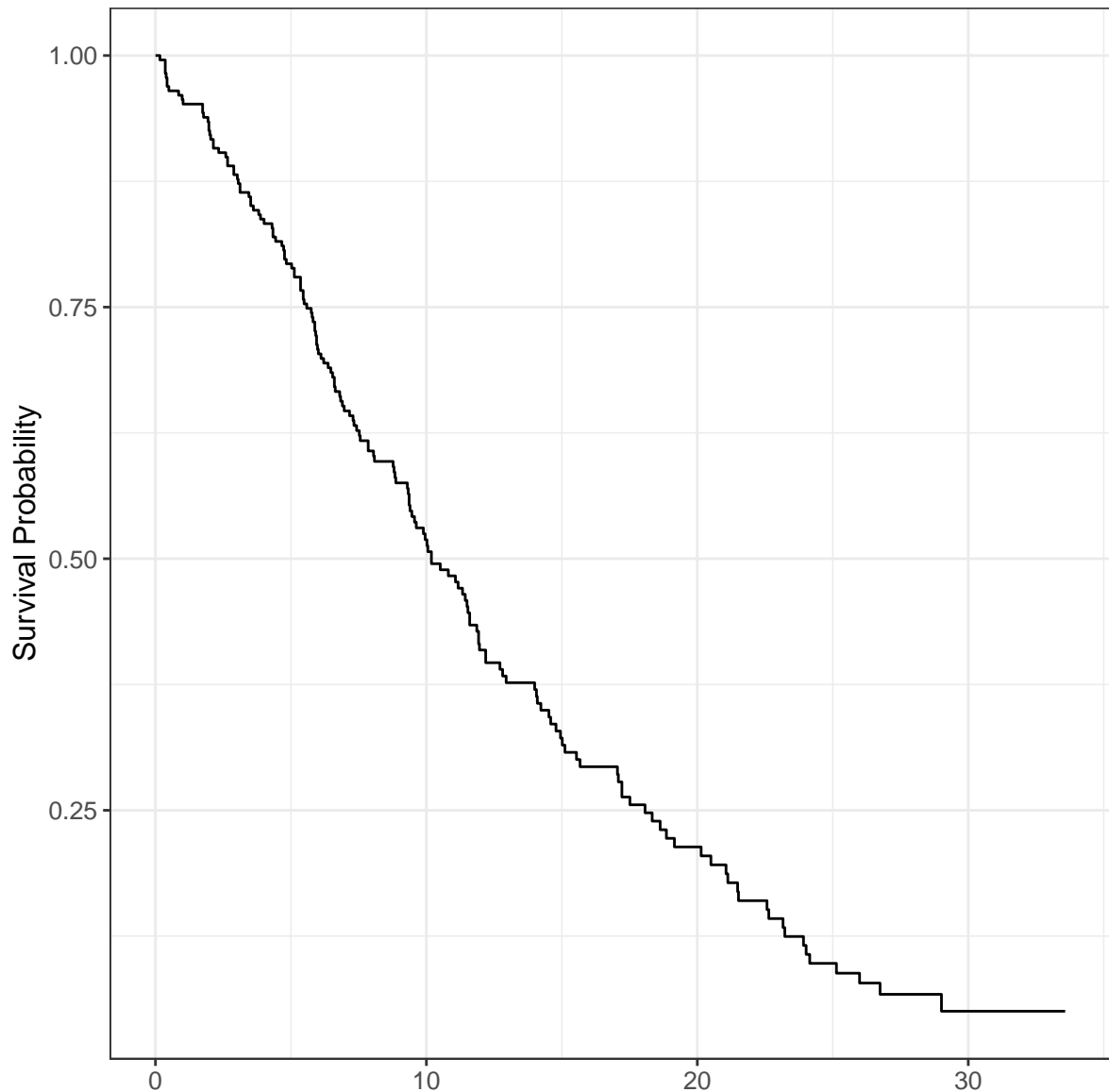
— Male, Asymptomatic     
 — Male, In bed <50% of the day     
 — Female, Asymptomatic  
— Male, Symptomatic and ambulatory     
 — Male, In bed > 50% of the day     
 — Female, Symptomatic and ambulatory

#### At Risk

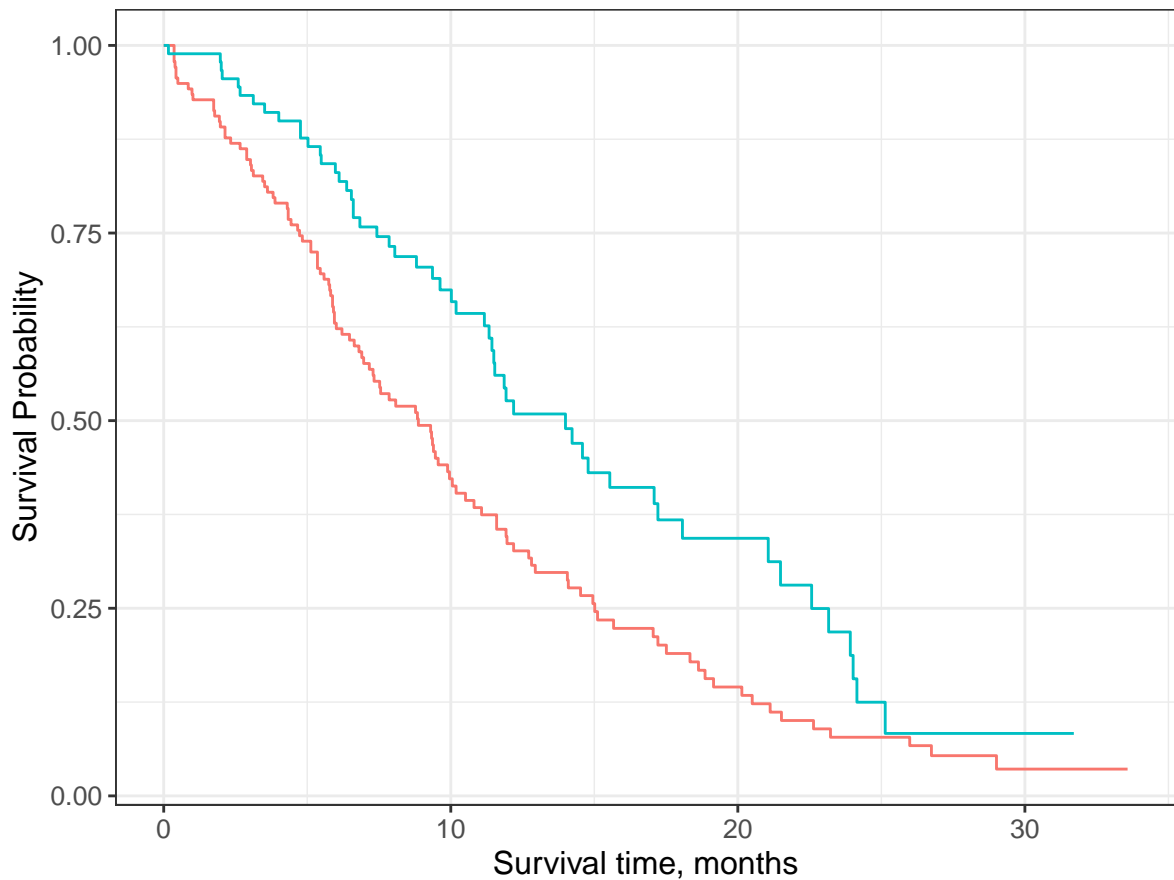
Male, Asymptomatic	36	18	6	1
Male, Symptomatic and ambulatory	71	20	5	1
Male, In bed <50% of the day	29	6	2	0
Male, In bed > 50% of the day	1	0	0	0
Female, Asymptomatic	27	13	2	0
Female, Symptomatic and ambulatory	42	23	8	1
Female, In bed <50% of the day	21	7	1	0

#### CUM EVENTS

Male, Asymptomatic	0	13	24	28
Male, Symptomatic and ambulatory	0	39	51	54
Male, In bed <50% of the day	0	22	26	28
Male, In bed > 50% of the day	0	1	1	1
Female, Asymptomatic	0	4	8	9
Female, Symptomatic and ambulatory	0	12	22	28
Female, In bed <50% of the day	0	11	15	16



N RISK	228	87	24	3
CUM EVENTS	0	103	148	165



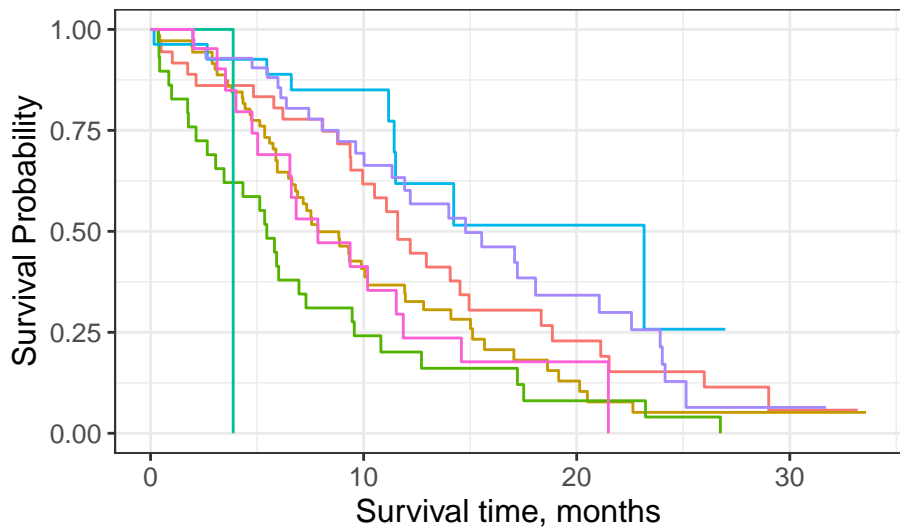
Male Female

Male

N RISK	138	44	13	2
CUM EVENTS	0	76	103	112

Female

N RISK	90	43	11	1
CUM EVENTS	0	27	45	53



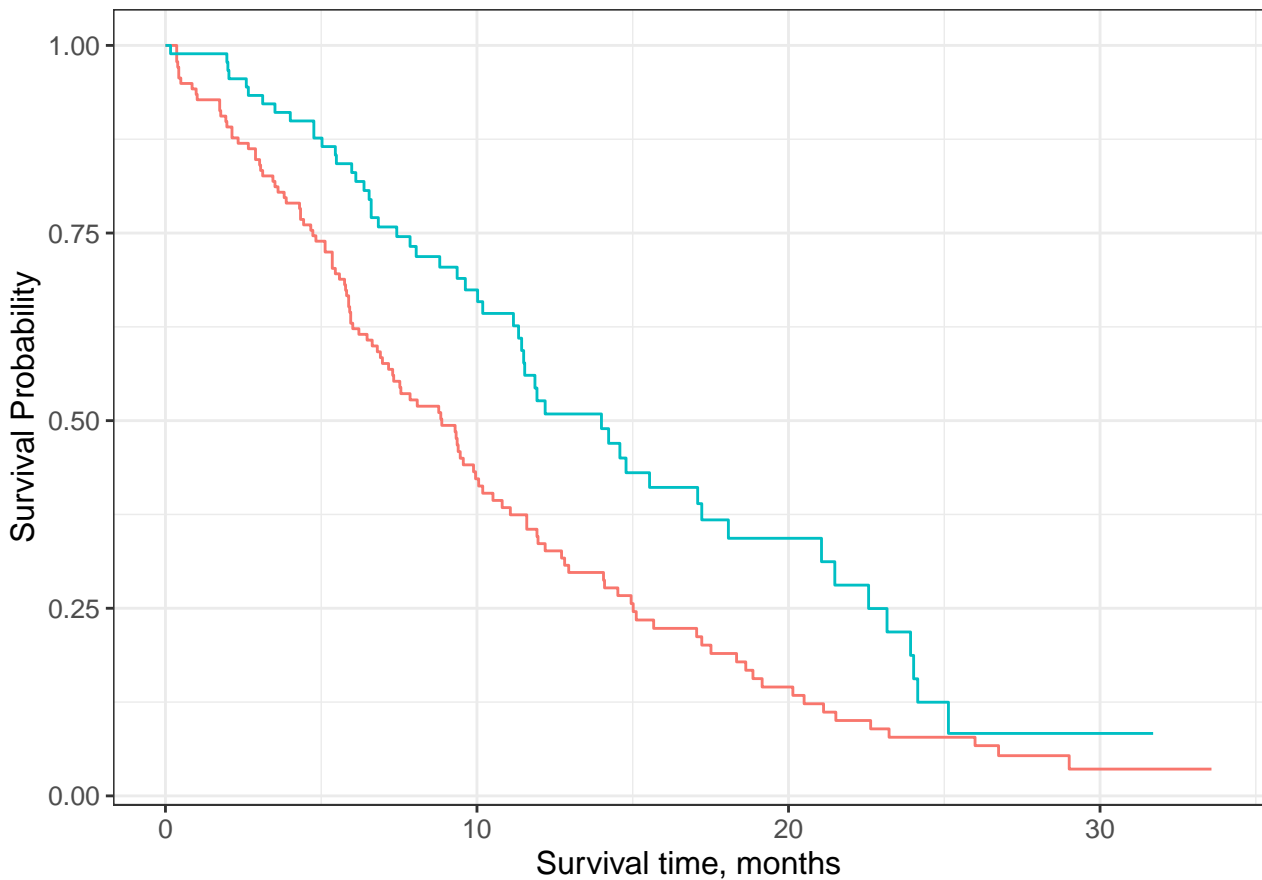
— Male, Asymptomatic
 — Male, In bed <50% of the day
 — Female, Asymptomatic
 — Male, Symptomatic and ambulatory
 — Male, In bed > 50% of the day
 — Female, Symptomatic and ambulatory

#### N RISK

Male, Asymptomatic	36	18	6	1
Male, Symptomatic and ambulatory	71	20	5	1
Male, In bed <50% of the day	29	6	2	0
Male, In bed > 50% of the day	1	0	0	0
Female, Asymptomatic	27	13	2	0
Female, Symptomatic and ambulatory	42	23	8	1
Female, In bed <50% of the day	21	7	1	0

#### CUM EVENTS

Male, Asymptomatic	0	13	24	28
Male, Symptomatic and ambulatory	0	39	51	54
Male, In bed <50% of the day	0	22	26	28
Male, In bed > 50% of the day	0	1	1	1
Female, Asymptomatic	0	4	8	9
Female, Symptomatic and ambulatory	0	12	22	28
Female, In bed <50% of the day	0	11	15	16



— Male — Female

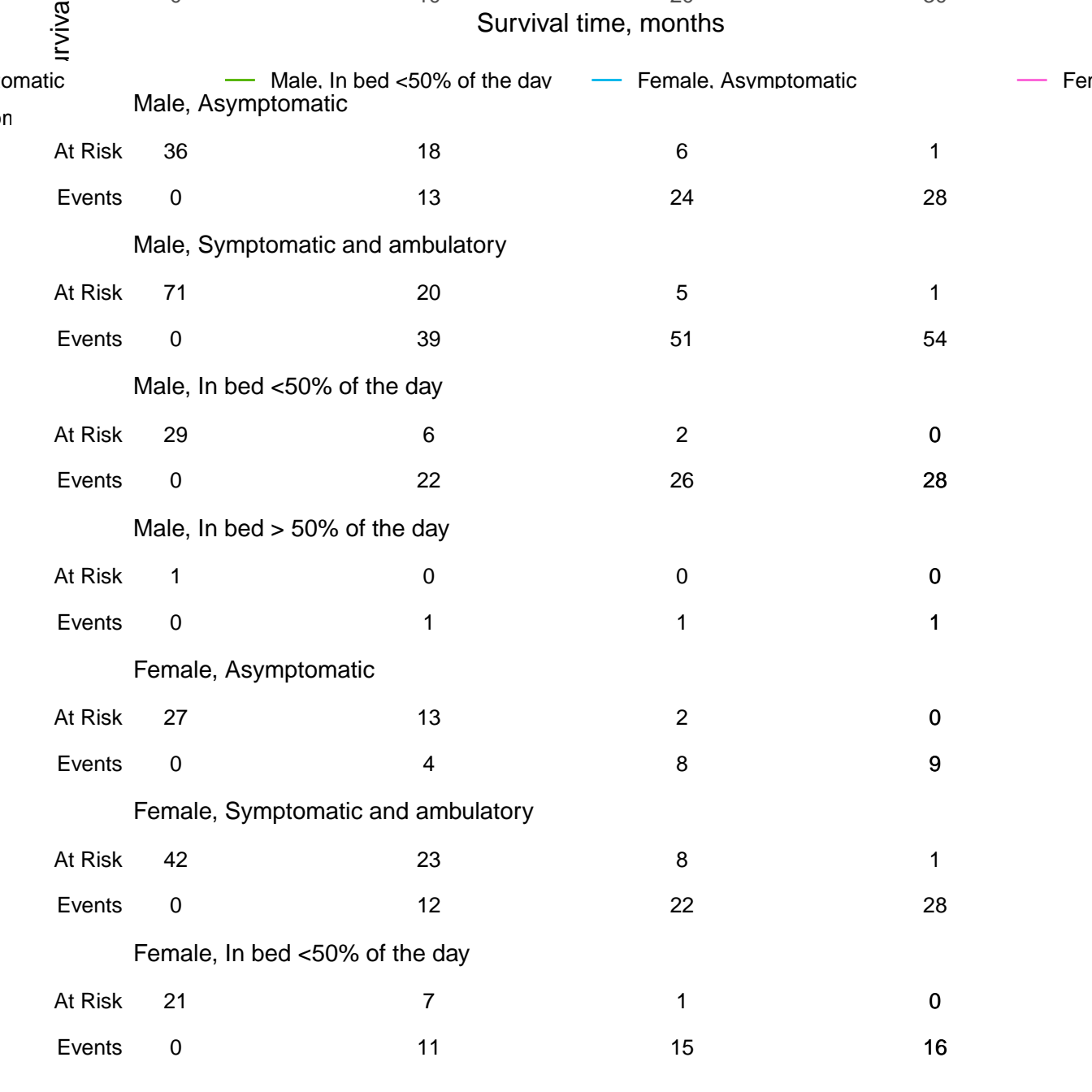
#### Male

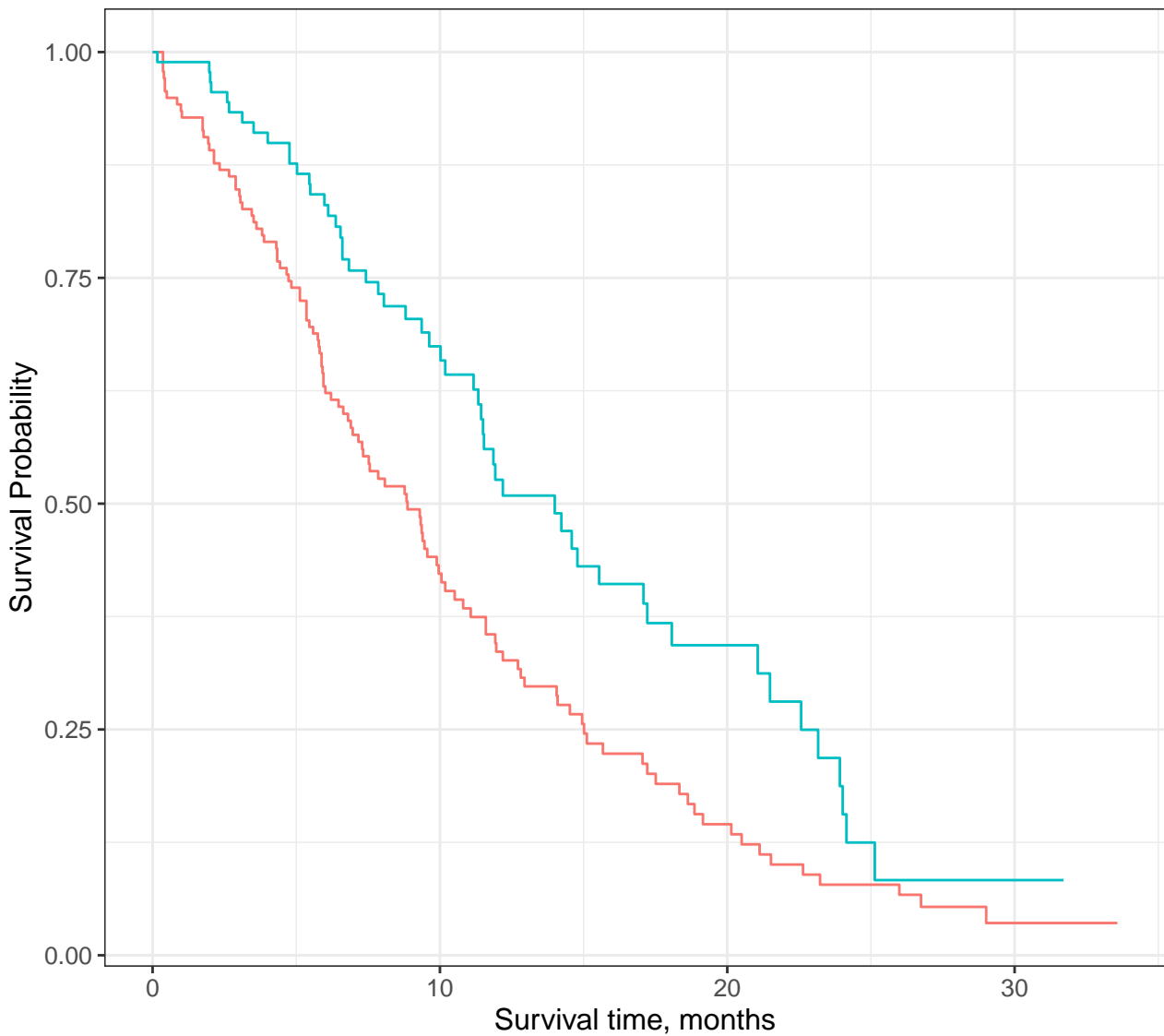
At Risk	138	44	13	2
Events	0	76	103	112

#### Female

At Risk	90	43	11	1
Events	0	27	45	53

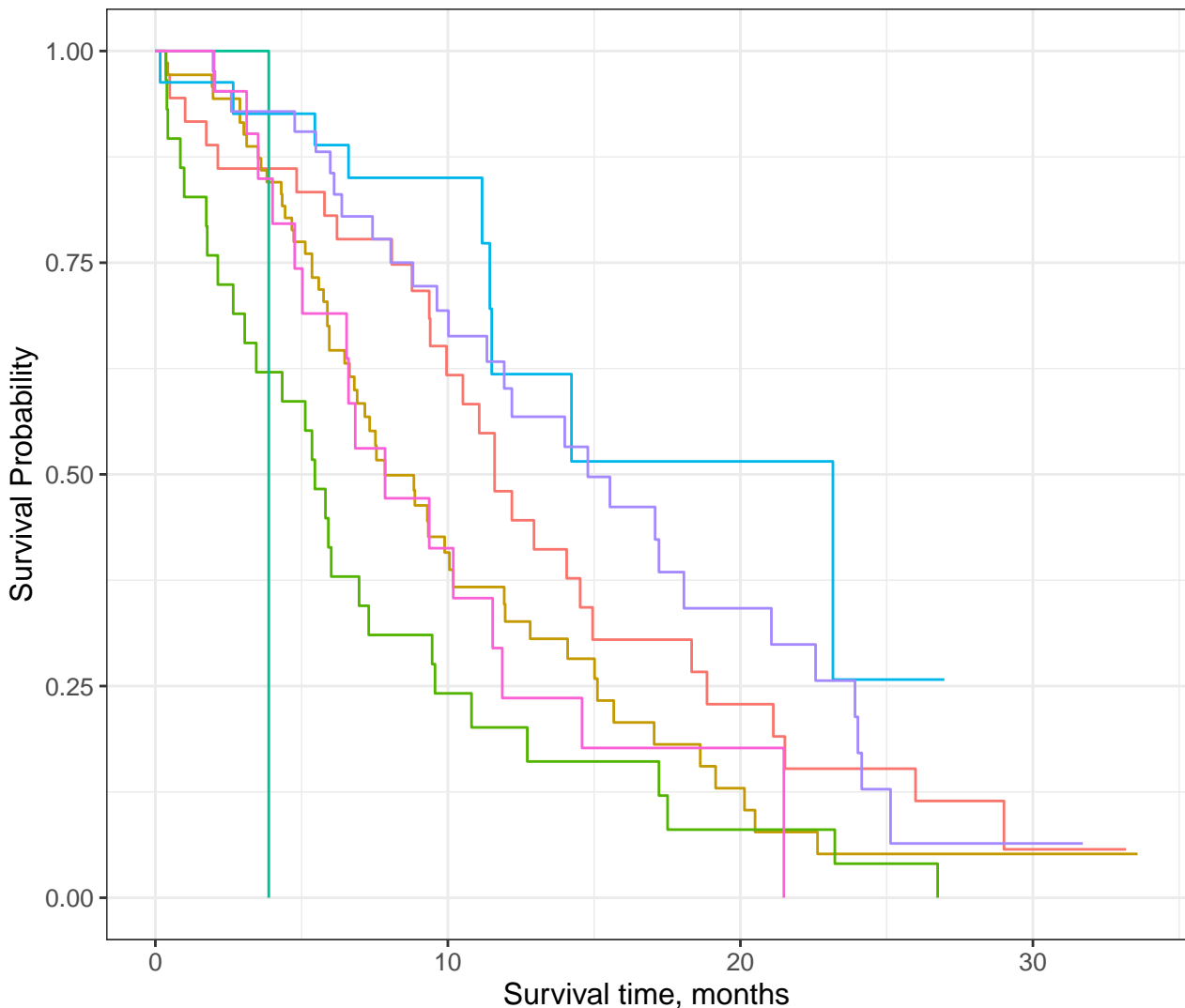




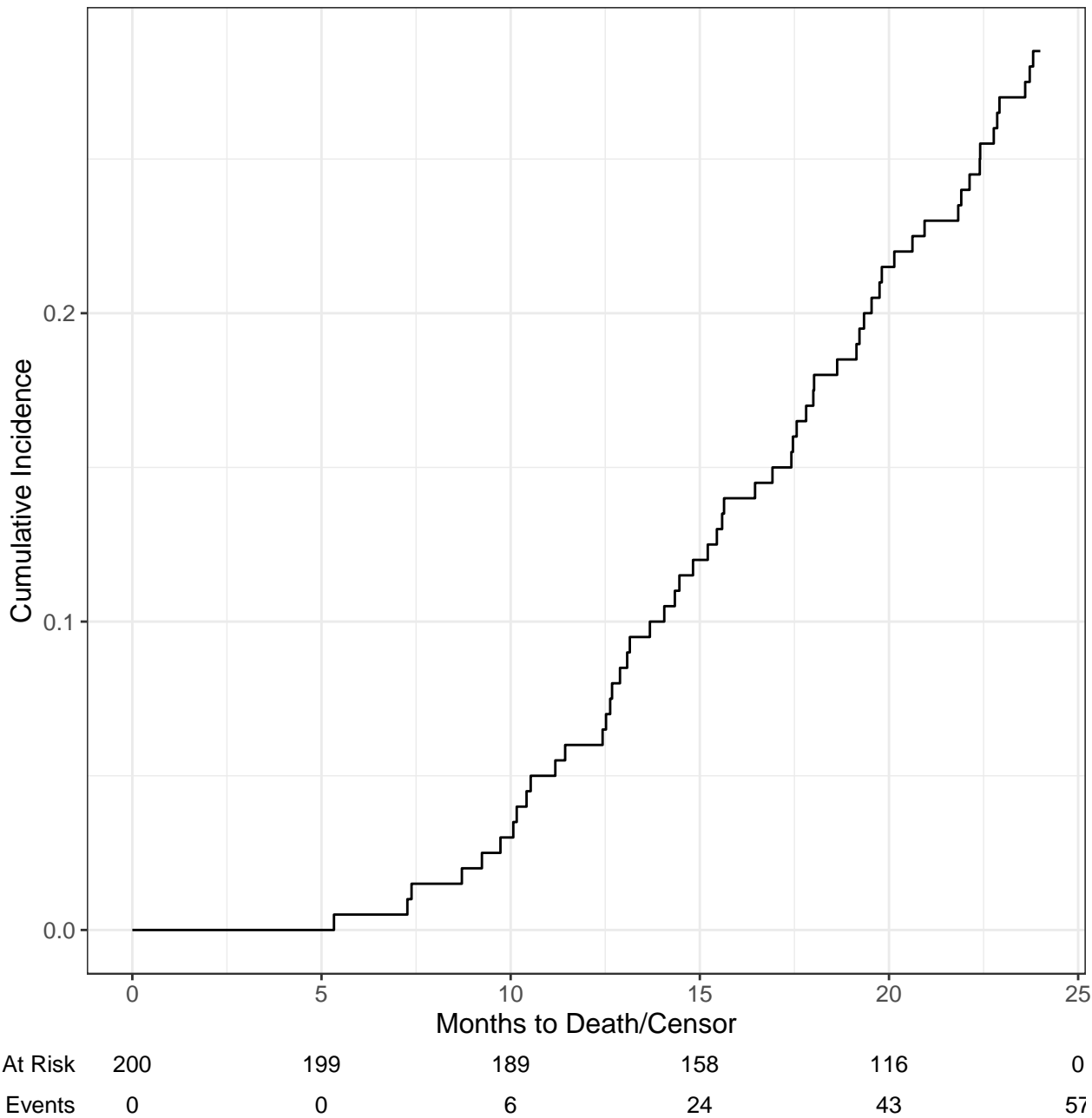


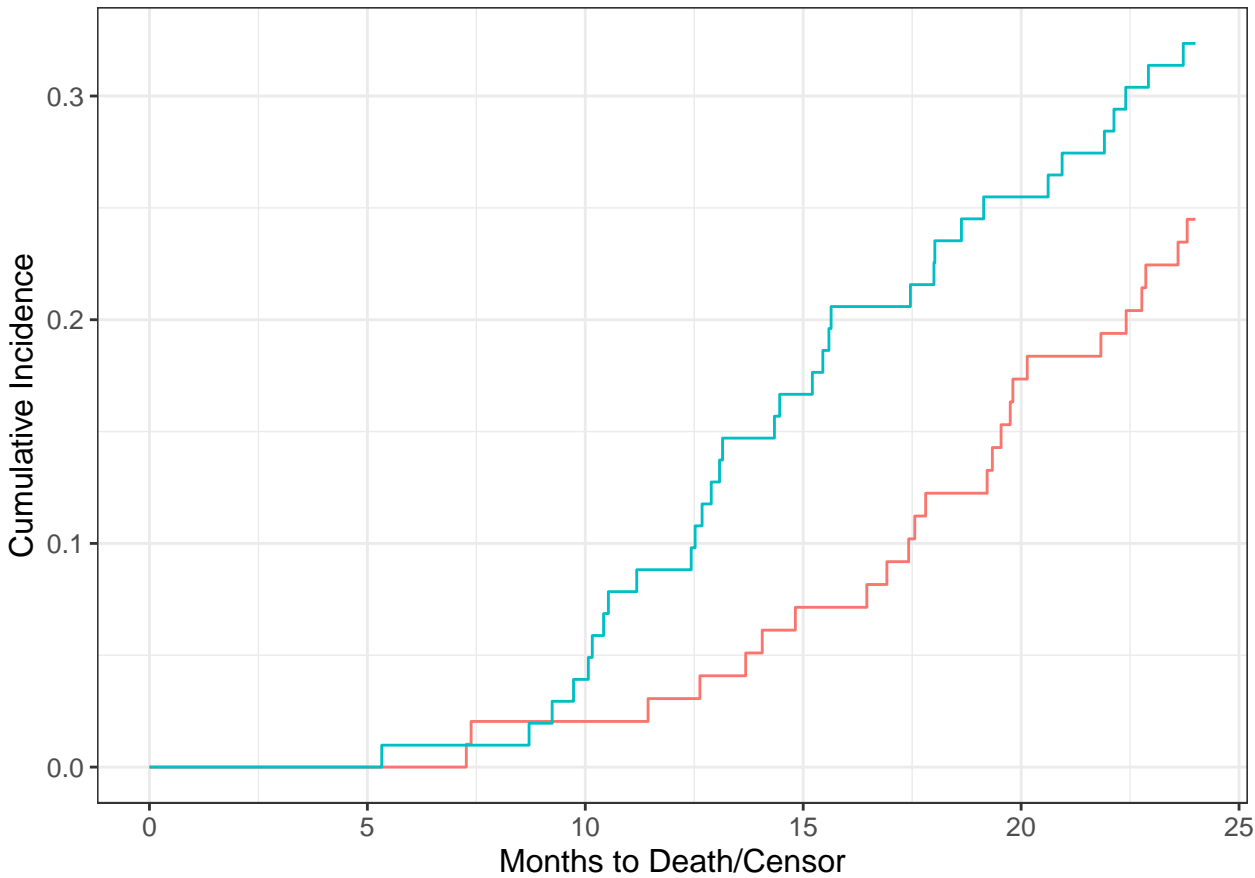
— Male — Female

At Risk	228	87	24	3
Events	0	103	148	165



omatic	Male, In bed <50% of the day	Female, Asymptomatic	Female, Symptomatic and ambulatory	
omatic and ambulatory	Male, In bed > 50% of the day			
At Risk	227	87	24	3
Events	0	102	147	218





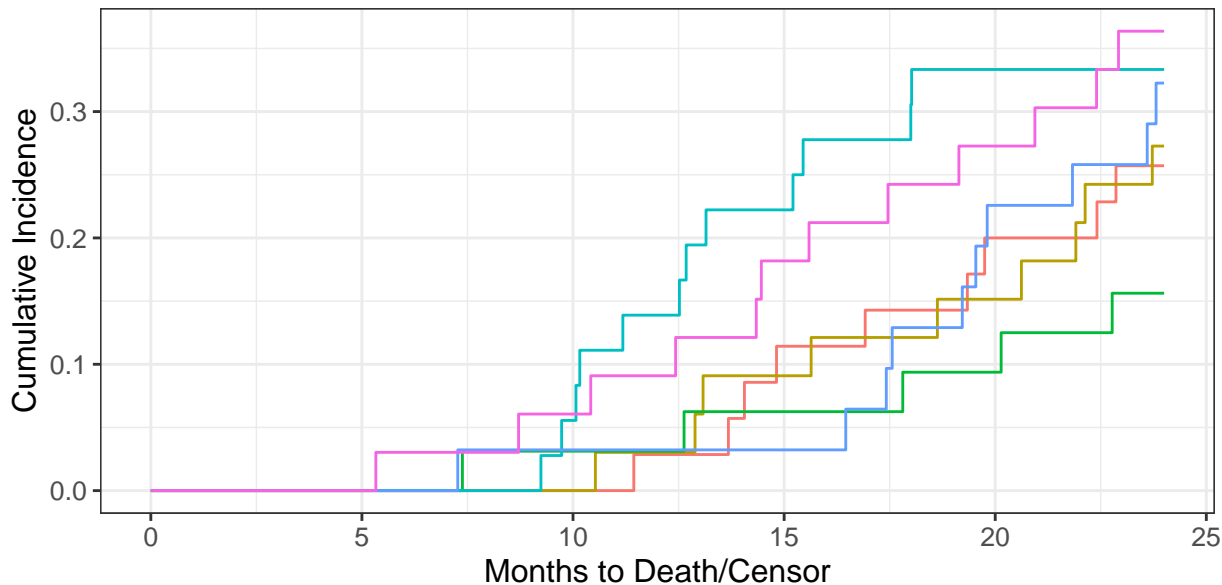
— Drug A — Drug B

#### Drug A

At Risk	98	97	94	83	61	0
Events	0	0	2	7	17	24

#### Drug B

At Risk	102	102	95	75	55	0
Events	0	0	4	17	26	33



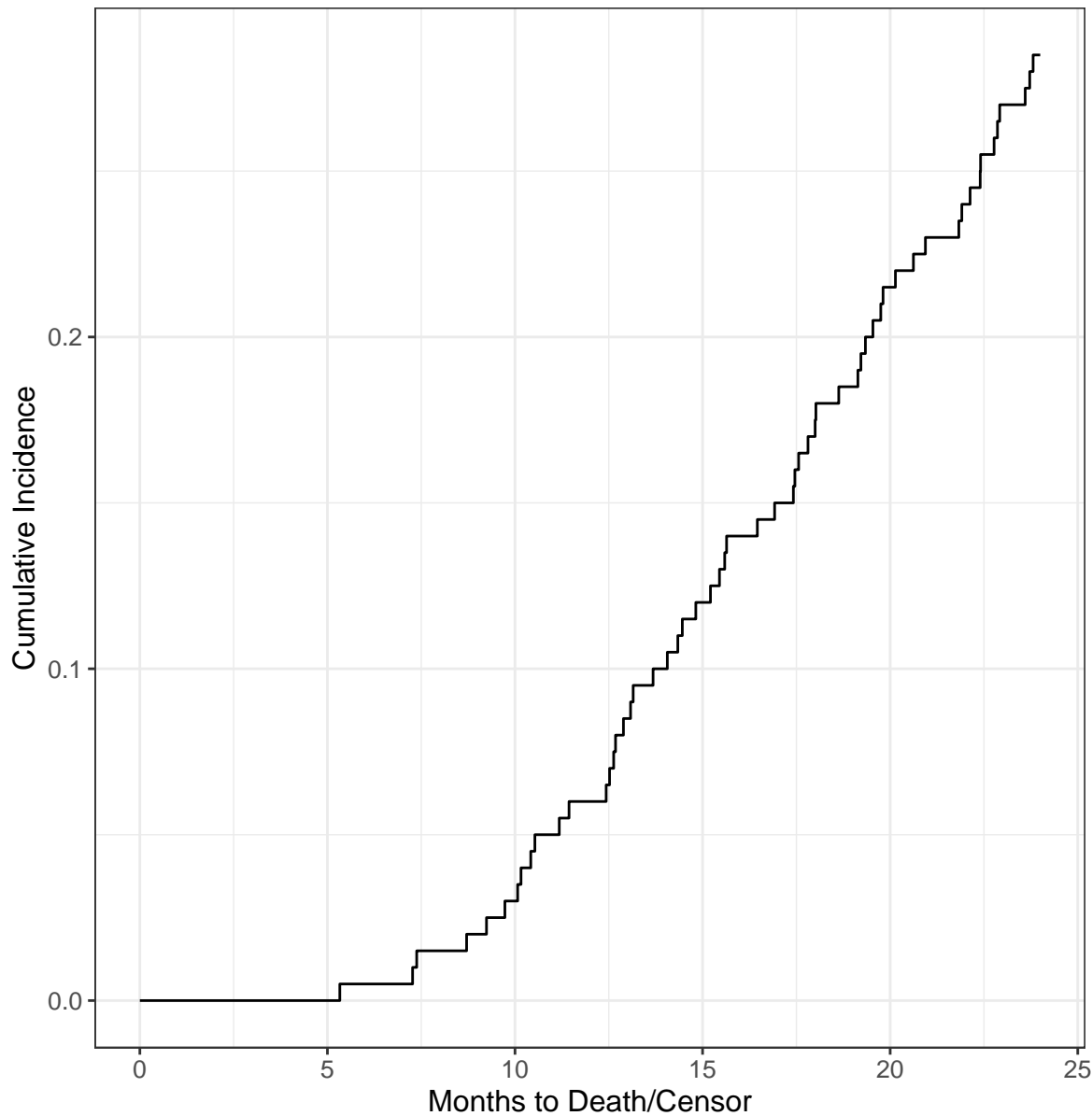
— Drug A, I    — Drug A, II    — Drug A, III  
— Drug B, I    — Drug B, II    — Drug B, III

#### At Risk

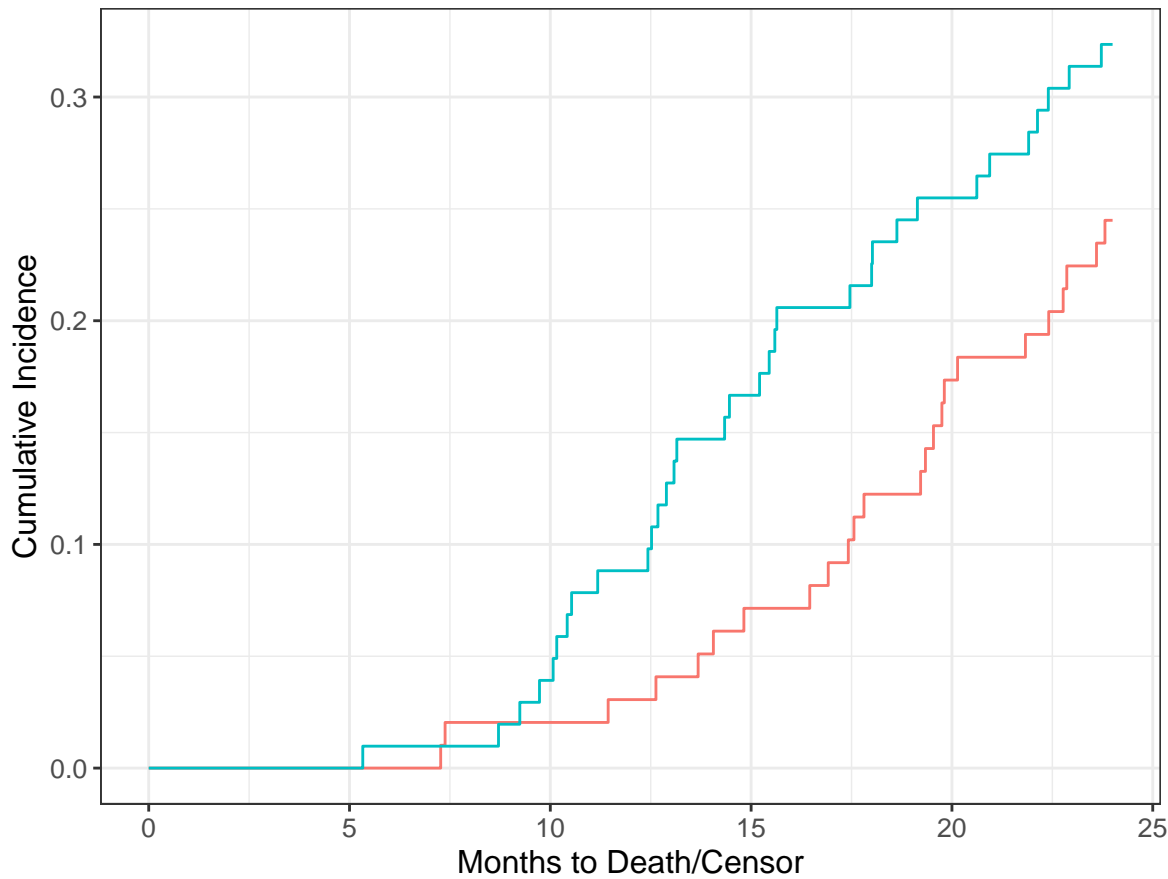
Drug A, I	35	35	35	30	22	0
Drug B, I	33	33	33	28	23	0
Drug A, II	32	32	30	27	23	0
Drug B, II	36	36	32	23	17	0
Drug A, III	31	30	29	26	16	0
Drug B, III	33	33	30	24	15	0

#### Events

Drug A, I	0	0	0	4	7	9
Drug B, I	0	0	0	3	5	9
Drug A, II	0	0	1	2	3	5
Drug B, II	0	0	2	8	12	12
Drug A, III	0	0	1	1	7	10
Drug B, III	0	0	2	6	9	12



At Risk	200	199	189	158	116	0
CUM EVENTS	0	0	6	24	43	57



— Drug A — Drug B

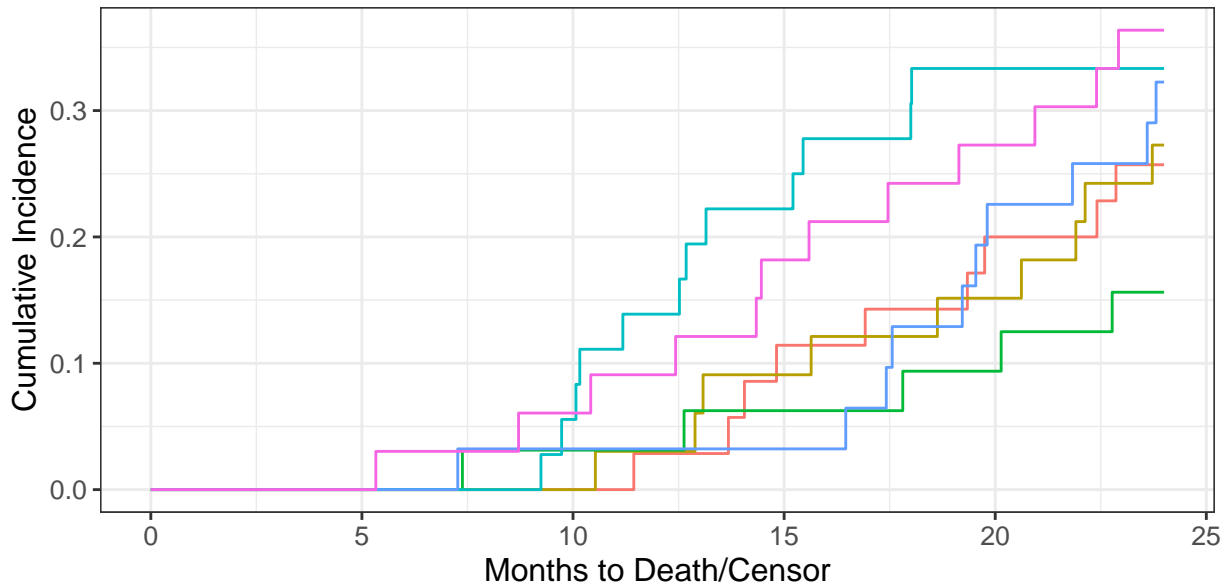
#### Drug A

At Risk	98	97	94	83	61	0
CUM EVENTS	0	0	2	7	17	24

#### Drug B

At Risk	102	102	95	75	55	0
CUM EVENTS	0	0	4	17	26	33



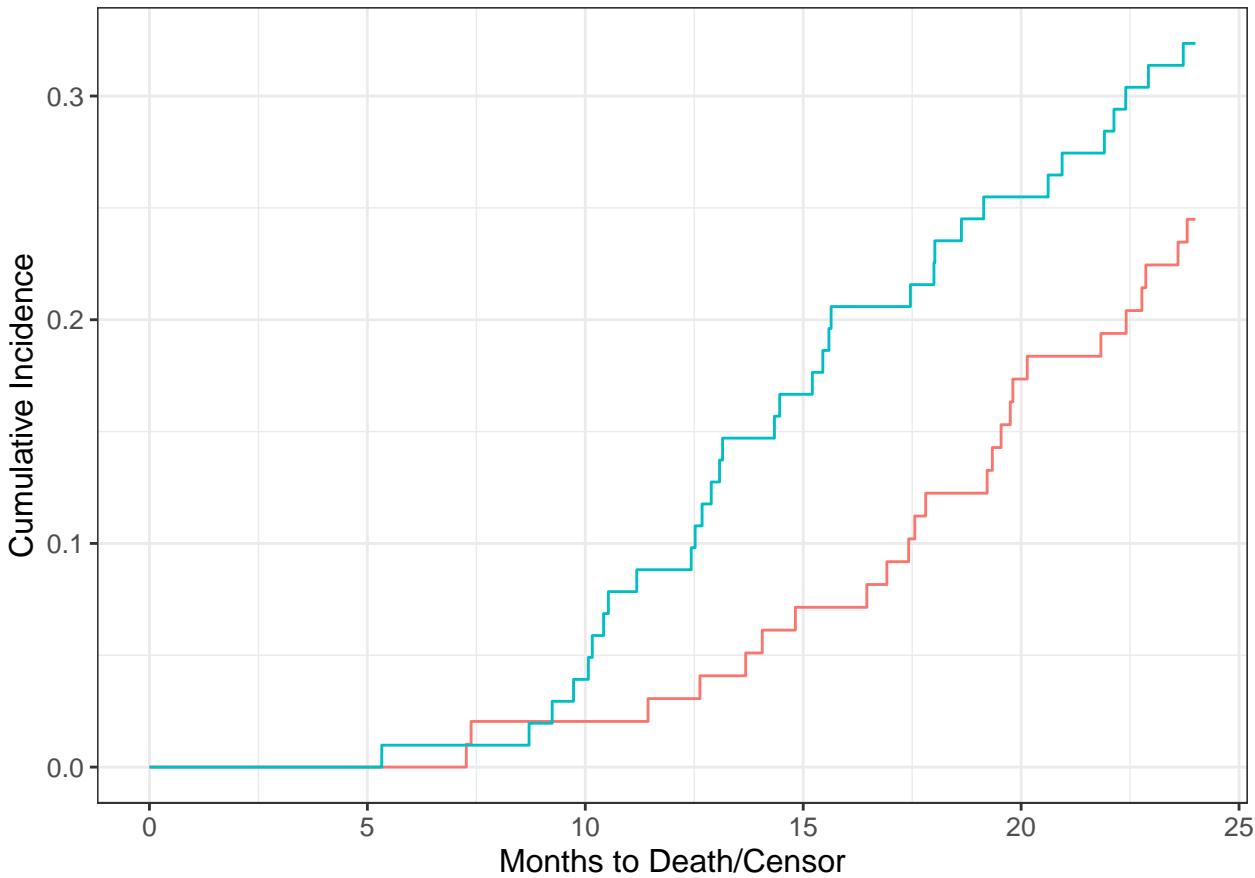


#### At Risk

Drug A, I	35	35	35	30	22	0
Drug B, I	33	33	33	28	23	0
Drug A, II	32	32	30	27	23	0
Drug B, II	36	36	32	23	17	0
Drug A, III	31	30	29	26	16	0
Drug B, III	33	33	30	24	15	0

#### CUM EVENTS

Drug A, I	0	0	0	4	7	9
Drug B, I	0	0	0	3	5	9
Drug A, II	0	0	1	2	3	5
Drug B, II	0	0	2	8	12	12
Drug A, III	0	0	1	1	7	10
Drug B, III	0	0	2	6	9	12



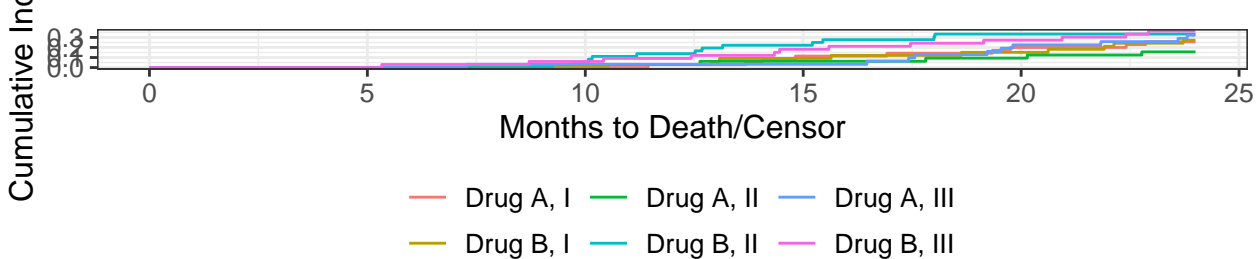
— Drug A — Drug B

#### Drug A

At Risk	98	97	94	83	61	0
Events	0	0	2	7	17	24

#### Drug B

At Risk	102	102	95	75	55	0
Events	0	0	4	17	26	33



#### Drug A, I

At Risk	35	35	35	30	22	0
Events	0	0	0	4	7	9

#### Drug B, I

At Risk	33	33	33	28	23	0
Events	0	0	0	3	5	9

#### Drug A, II

At Risk	32	32	30	27	23	0
Events	0	0	1	2	3	5

#### Drug B, II

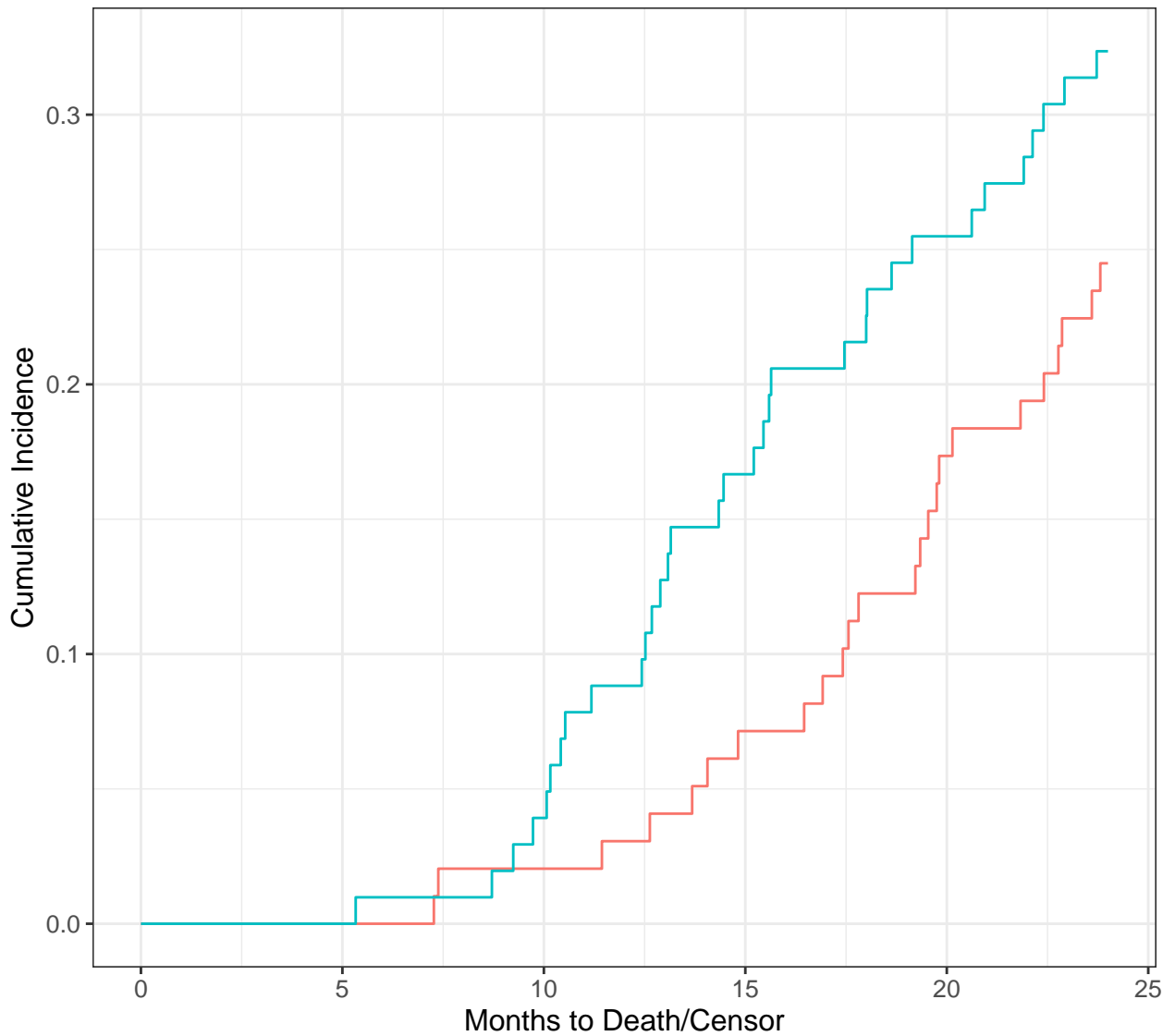
At Risk	36	36	32	23	17	0
Events	0	0	2	8	12	12

#### Drug A, III

At Risk	31	30	29	26	16	0
Events	0	0	1	1	7	10

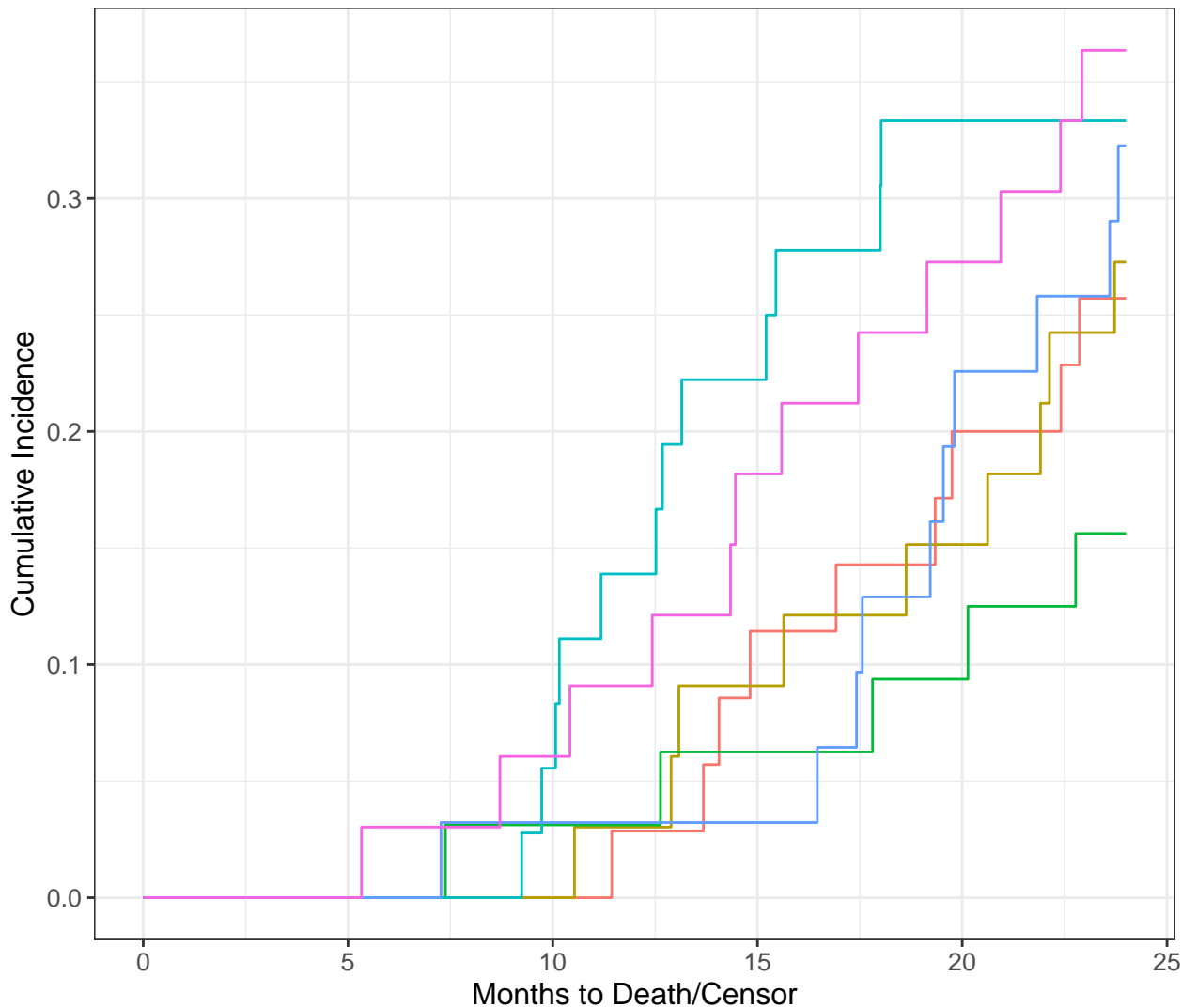
#### Drug B, III

At Risk	33	33	30	24	15	0
Events	0	0	2	6	9	12

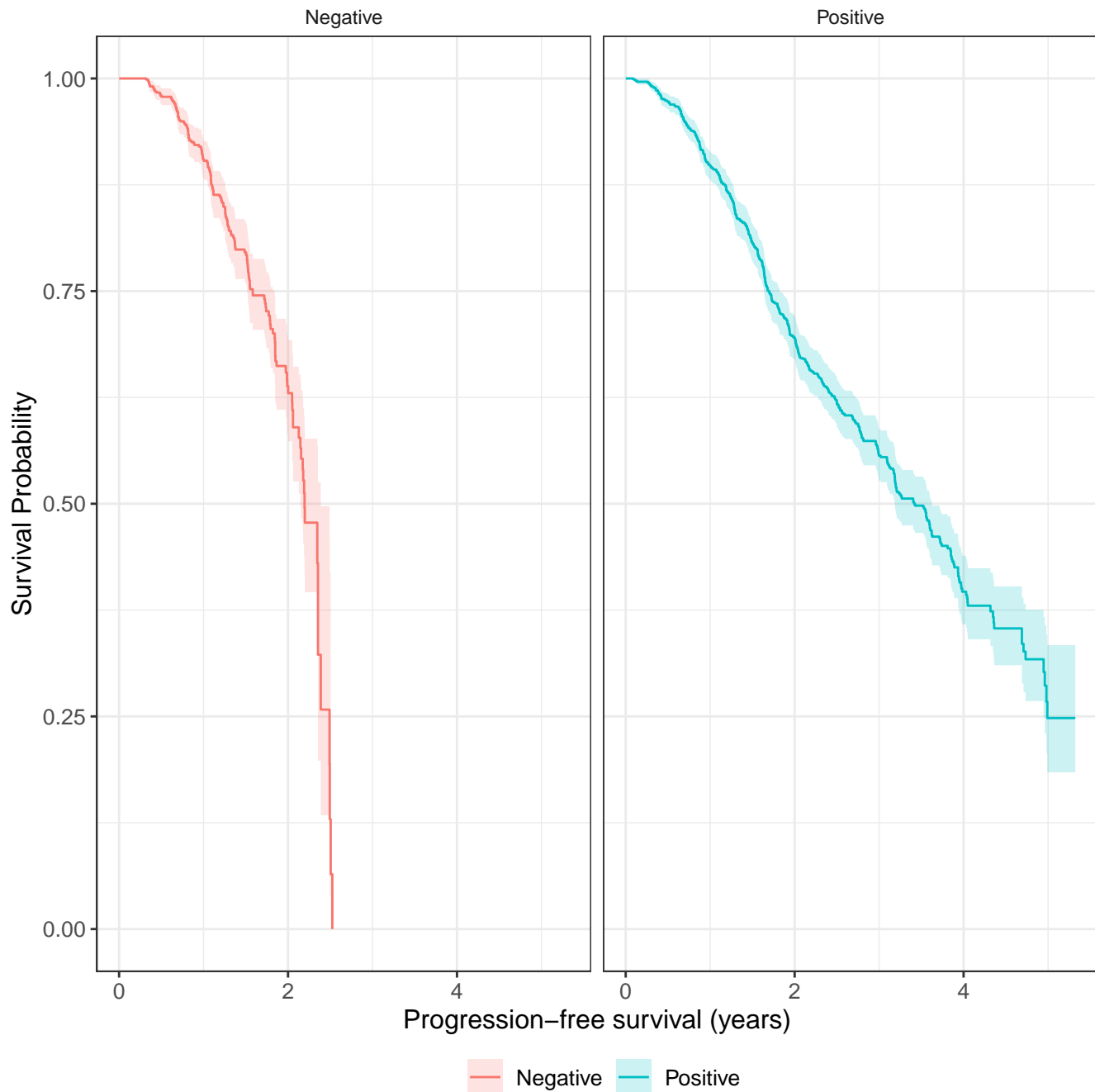


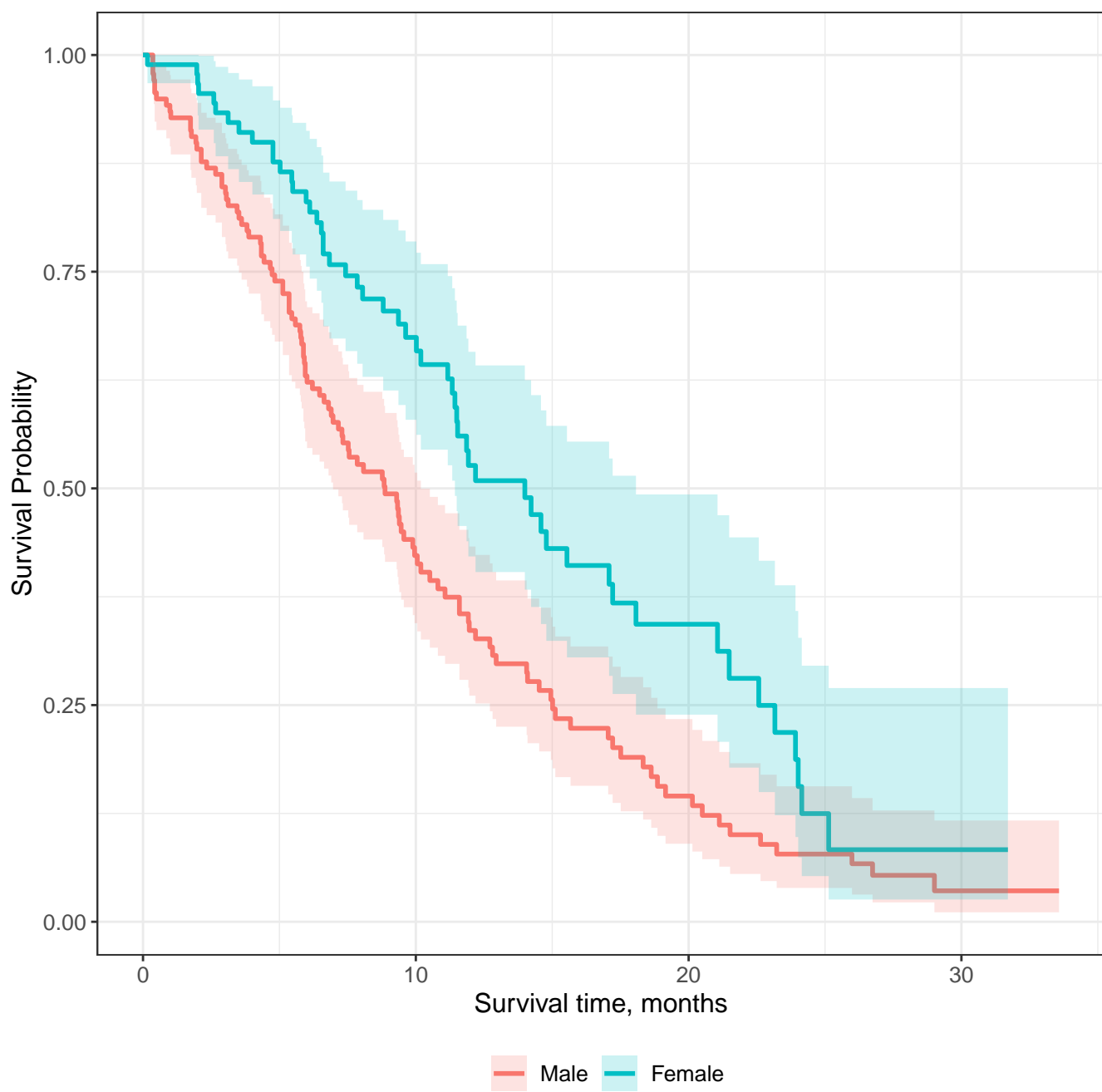
— Drug A — Drug B

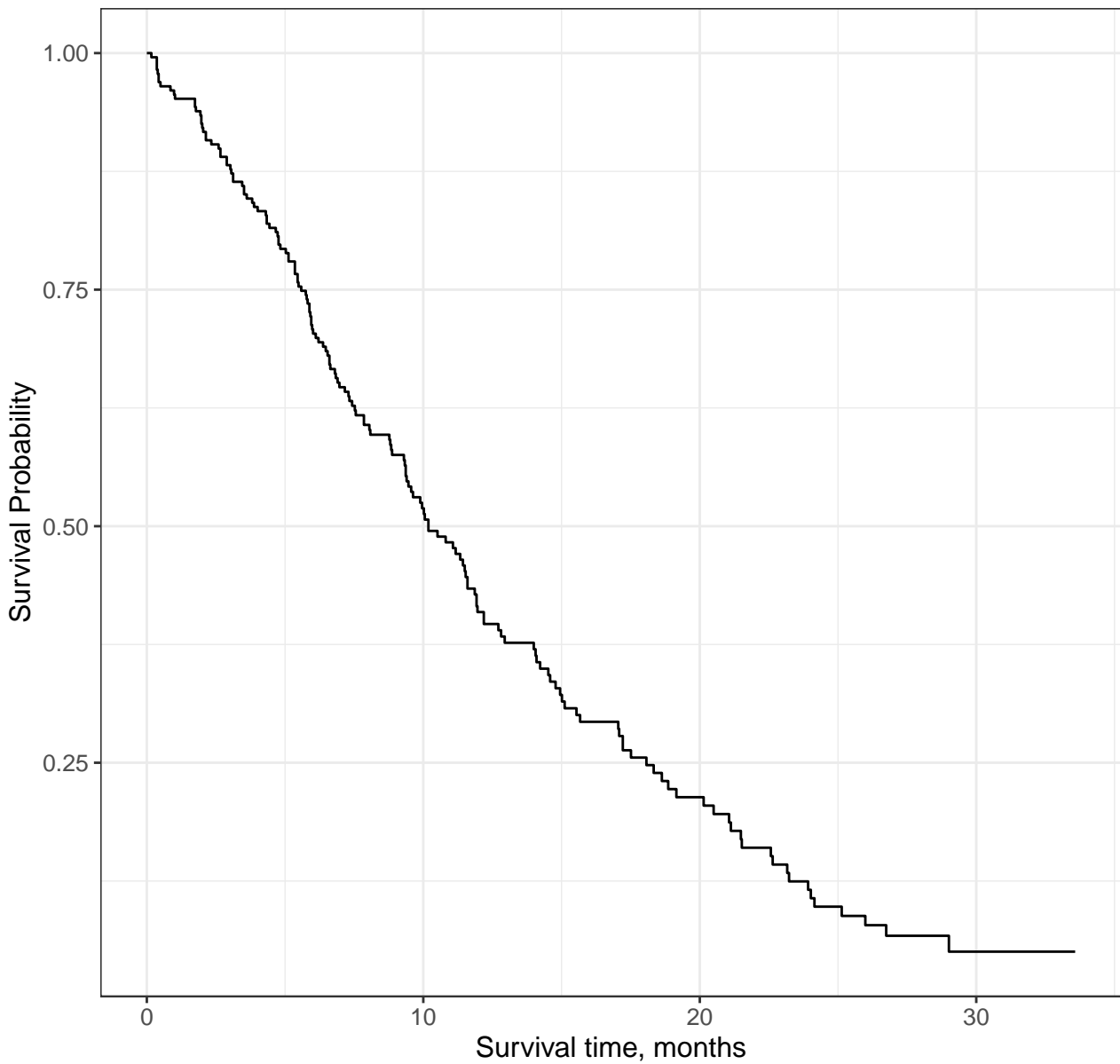
At Risk	200	199	189	158	116	0
Events	0	0	6	24	43	57



At Risk	200	199	189	158	116	0
Events	0	0	6	24	43	57







At Risk	228	87	24	3
Events	0	103	148	165